

## G28 Indoor/Outdoor Base Models



### Industry Standards

UL/cUL Listed Type 12, 3R, 4; 4X optional

CE  
IP 56 Internal Loop  
IP 34 on External Loop  
Telcordia GR-487 capable (Outdoor)

### Application

- Industrial automation
- Telecommunications equipment
- Waste water treatment systems
- Package handling equipment
- Security and defense systems
- And more

### Features

- Energy efficient rotary compressor
- R407c and R134a earth-friendly refrigerants and RoHS compliant
- Models for 115, 230 and 400/460 3-phase AC volt power input
- UL Listed to save customers time and money with agency approvals
- Outdoor model operating temperature range from -40 F/-40 C to 131 F/55 C
- Exterior and partial recessed mounting options
- Attractive industrial design with minimal use of visible fasteners
- Reliable mechanical thermostat on enclosure side of the unit. Indoor Air Conditioner models include digital display on ambient side.
- Galvanized sheet-metal cover for rugged factory and outdoor environments
- Easy-mount flanges for simple installation

- Cut-out adapter options for enclosures with McLean GENESIS® and T-Series air conditioners, enabling users to easily transition to the new unit
- Dust-resistant condenser coil allows the unit to be run filterless in most applications
- Cleanable, reusable aluminum mesh filter to protect coils for maximum cooling performance
- Mounting hardware, gaskets and user manual furnished with the unit
- Every unit functionally tested before shipping
- Standard Indoor Air Conditioner models also include:
  - Active condensate management with heater strip
  - Power-off relay for door switch and other system requirements
  - Malfunction switch
- Standard Outdoor Air Conditioner models also include:
  - Telcordia GR-487 capable
  - Corrosion-resistant components
  - Malfunction switch
  - Compressor heater
  - Head pressure control
  - 2000 W enclosure heater

### Specifications

- Nominal cooling capacity 4000 & 6000 BTUs/Hr. (1172 and 1758 W)
- Outdoor model operating temperature range from -40 F/-40 C to 131 F/55 C

### Finish

- RAL 7035 light-gray, semi-textured powder-coat paint
- Other colors and textures available

### Notes

Visit [www.McLeanCoolingTech.com](http://www.McLeanCoolingTech.com) to download 2D and 3D CAD drawings into the overall design of your electronic system.

**SPECTRACOOL™**

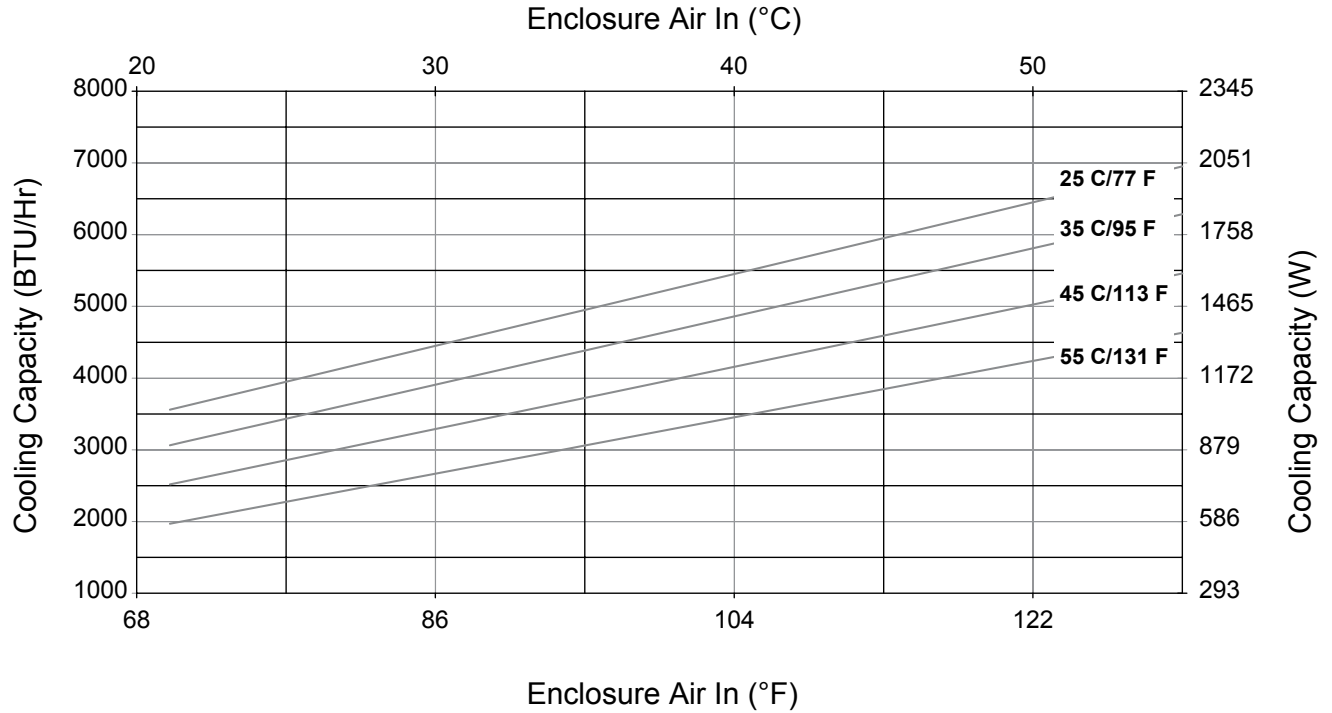
Technical Data **G28 Models 4000/6000 BTU/Hr. (1172/1758 W)**

<b>CATALOG NUMBER</b>						
Indoor Model	G280416G050	G280426G050	G280446G050	G280616G050	G280626G050	G280646G050
Indoor Model Stainless Steel Type 4X	G280416G051	G280426G051	G280446G051	G280616G051	G280626G051	G280646G051
Outdoor Model without Heat Pkg.	G280416G100	G280426G100	G280446G100	G280616G100	G280626G100	G280646G100
Outdoor Model Partial Recessed Mount	G280416G101	G280426G101	G280446G101	G280616G101	G280626G101	G280646G101
Outdoor Model without Heat Pkg. Stainless Steel Type 4X	G280416G102	G280426G102	G280446G102	G280616G102	G280626G102	G280646G102
Outdoor Model with Heat Pkg.	G280416G150	G280426G150		G280616G150	G280626G150	
Outdoor Model with Heat Pkg. Stainless Steel Type 4X	G280416G151	G280426G151		G280616G151	G280626G151	
<b>COOLING PERFORMANCE</b>						
<b>Nominal:</b>						
<b>BTUs/Hr.</b>	<b>4600/4900</b>	<b>4600/4900</b>	<b>4600/4900</b>	<b>6000/6400</b>	<b>6000/6400</b>	<b>5400/6000</b>
<b>Watts</b>	<b>1347/1435</b>	<b>1347/1435</b>	<b>1347/1435</b>	<b>1757/1874</b>	<b>1757/1874</b>	<b>1581/1757</b>
At 131 F/131 F (55 C/55 C):						
BTUs/Hr. (50/60 Hz)	4600/4900	4600/4900	4600/4900	6000/6400	6000/6400	5400/6000
W (50/60 Hz)	1347/1435	1347/1435	1347/1435	1757/1874	1757/1874	1581/1757
At 95 F/95 F (35 C/35 C):						
BTUs/Hr. (50/60 Hz)	4300/4600	4300/4600	4324/4655	5600/6000	5600/6000	5054/5685
W (50/60 Hz)	1260/1436	1260/1436	1267/1364	1641/1758	1641/1758	1481/1666
Refrigerant	R407C	R407C	R134A	R407C	R407C	R134A
Refrigerant Charge (ounces/grams)	20	20	16	20	20	16
Operating Temperature Range:						
Maximum (°F/°C)	131 F/55 C	131 F/55 C	131 F/55 C	131 F/55 C	131 F/55 C	131 F/55 C
Minimum (°F/°C)	-40 F/-40 C	-40 F/-40 C	-40 F/-40 C	-40 F/-40 C	-40 F/-40 C	-40 F/-40 C
Air Flow at 0 Static Pressure:						
Internal loop 50 Hz (CFM / m³/hr.)	189/321	189/321	189/321	189/321	189/321	189/321
External loop 50 Hz (CFM / m³/hr.)	291/494	291/494	291/494	291/494	291/494	291/494
Internal loop 60 Hz (CFM / m³/hr.)	221/375	221/375	221/375	221/375	221/375	221/375
External loop 60 Hz (CFM / m³/hr.)	300/509	300/509	300/509	300/509	300/509	300/509
Max. Heater W (Outdoor Models)	2000	2000		2000	2000	
<b>ELECTRICAL DATA</b>						
<b>Rated Voltage</b>	<b>115</b>	<b>230</b>	<b>460 3~</b>	<b>115</b>	<b>230</b>	<b>460 3~</b>
Frequency (Hz)	50/60	50/60	50/60	50/60	50/60	50/60
Operating Range	+/- 10%	+/- 10%	+/- 10%	+/- 10%	+/- 10%	+/- 10%
Max. Power Consumption (W at 50/60 Hz)	1138.5/1311	1058/1334	598/644	1138.5/1311	1058/1334	598/644
Max. Nominal Current (A at 50/60 Hz)	9.9/11.4	4.6/5.8	1.3/1.4	9.9/11.4	4.6/5.8	1.3/1.4
Starting Current (A)	36.2	17.7	7.7	36.2	17.7	7.7
Agency Approvals	cUL Listed CE	cUL Listed CE	cUL Listed CE	cUL Listed CE	cUL Listed CE	cUL Listed CE
Power Input Description	10-ft. cord with IEC connection at unit and NEMA 5-15 plug	10-ft. cord with IEC connection at unit and NEMA 6-15 plug	Terminal Block	10-ft. cord with IEC connection at unit and NEMA 5-15 plug	10-ft. cord with IEC connection at unit and NEMA 6-15 plug	Terminal Block
<b>ENCLOSURE PROTECTION</b>						
UL Type	Type 12/3R/4 Standard 4X Stainless Steel Optional					
<b>CONTROLLER</b>						
Description	Basic Mechanical Thermostat					
Thermostat Location	Enclosure Side on All Base Models					
Factory Thermostat Setting (°F/°C)	80/27	80/27	80/27	80/27	80/27	80/27
<b>SOUND LEVEL</b>						
At 1.5 M	68					
<b>UNIT CONSTRUCTION</b>						
Material	Galvanized Sheet Metal Standard (Optional: Stainless Steel)					
Finish	Powder Coat RAL 7035 Light Gray Standard					
<b>UNIT DIMENSIONS</b>						
Height (in./mm)	28.55/725.1	28.55/725.1	28.55/725.1	28.55/725.1	28.55/725.1	28.55/725.1
Width (in./mm)	16.97/431.1	16.97/431.1	16.97/431.1	16.97/431.1	16.97/431.1	16.97/431.1
Depth (in./mm)	10.10/256.6	10.10/256.6	10.10/256.6	10.10/256.6	10.10/256.6	10.10/256.6
Weight (lb./kg)	84/38	84/38	84/38	84/38	84/38	84/38
<b>ACCESSORIES</b>						
Indoor Cutout Adapter	Enables SPECTRACOOL to be mounted to GENESIS M28 Air Conditioner Cutout Part #28621601					
Outdoor Cutout Adapter	Enables SPECTRACOOL to be mounted to T-Series T29 Air Conditioner Cutout Part #28621603					

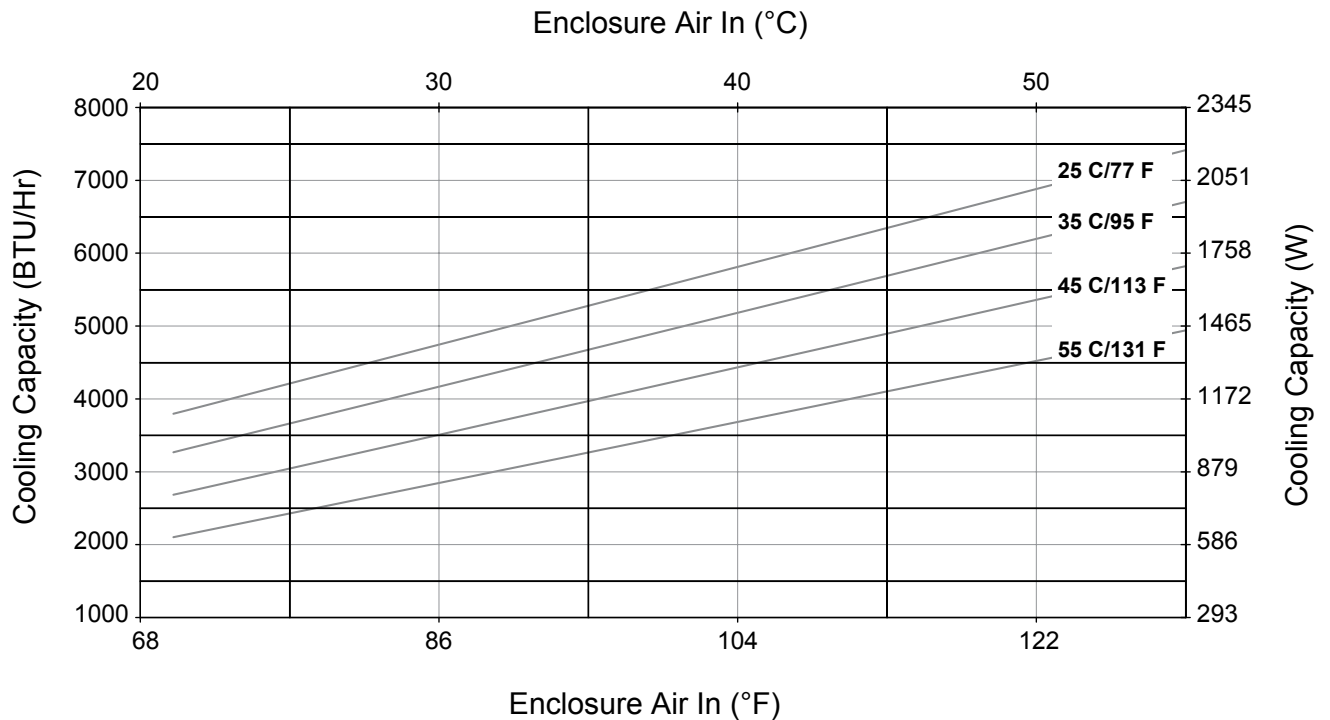
**SPECTRACOOL™**

Performance Curves for G28 Models 4000 BTU/Hr. (1347/1435 Watt)

**G28-04(1/2)6-GXXX- Capacity Curves at 50Hz; Without Filter**



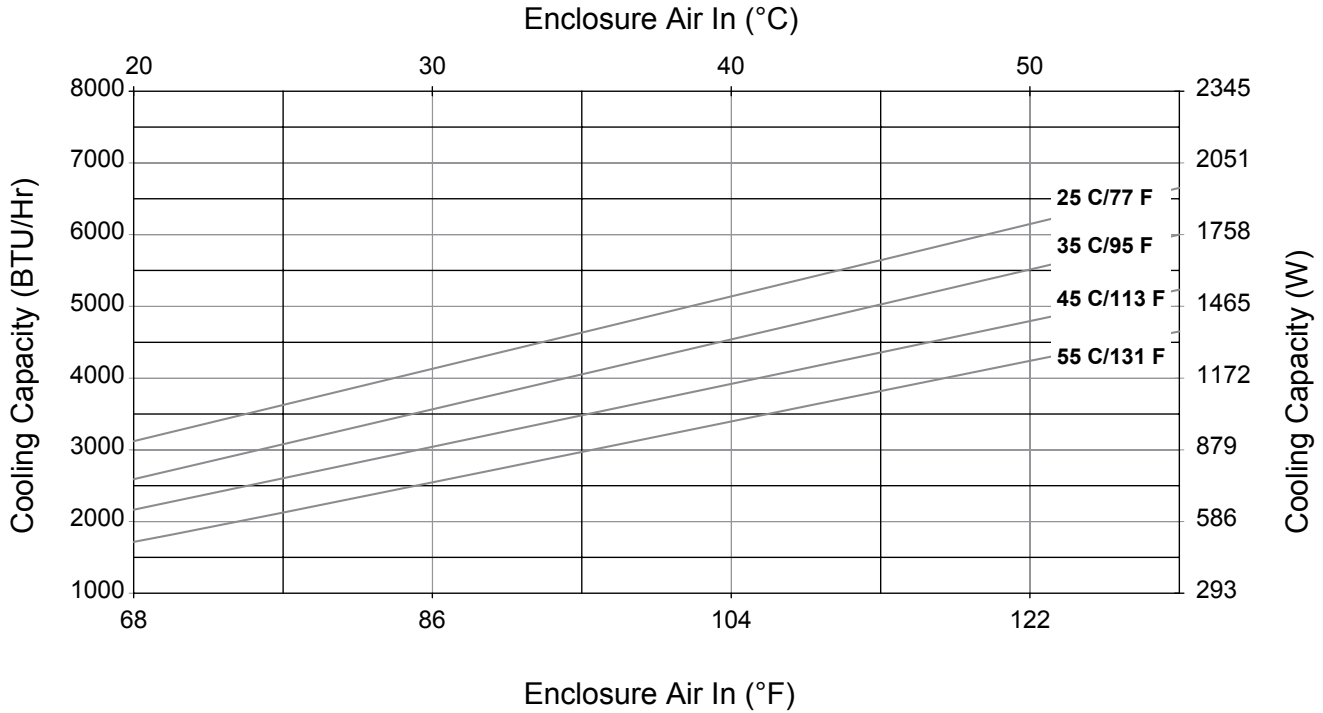
**G28-04(1/2)6-GXXX- Capacity Curves at 60Hz; Without Filter**



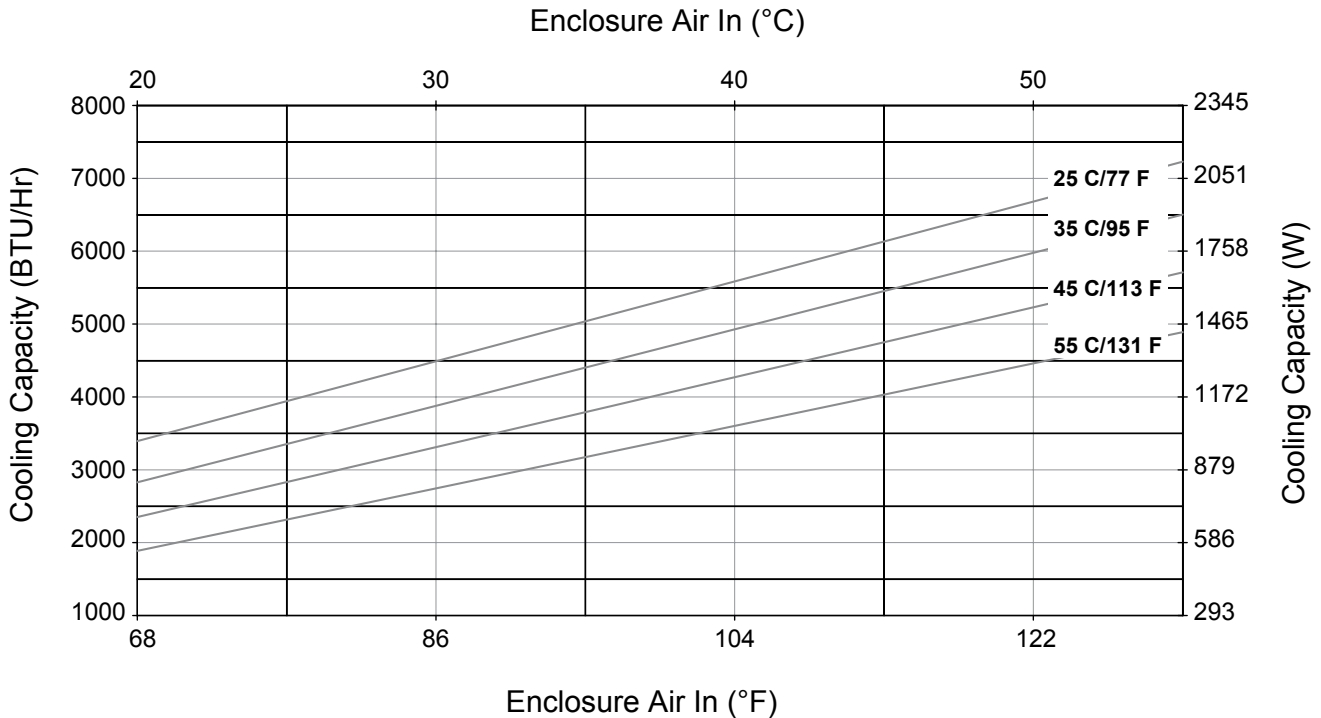
**SPECTRACOOL™**

Performance Curves for G28 Models 4000 BTU/Hr. (1347/1435 Watt)

**G28-0446-GXXX- Capacity Curves at 50Hz; Without Filter**



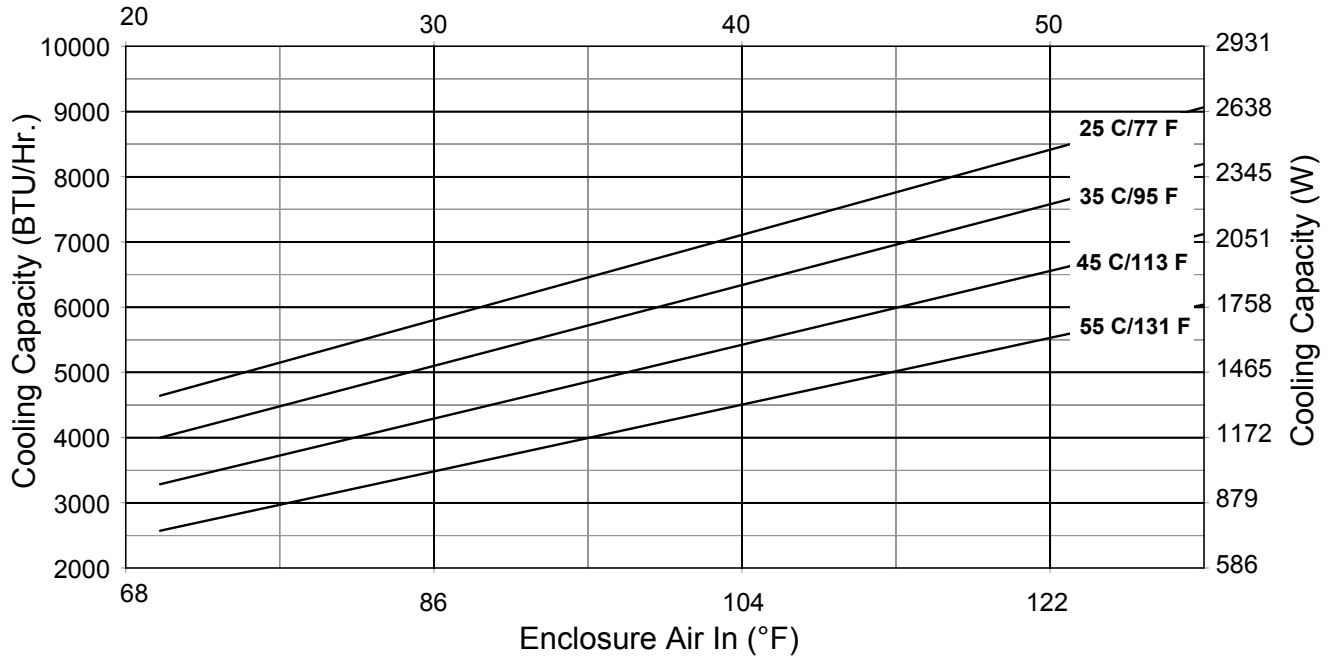
**G28-0446-GXXX- Capacity Curves at 60Hz; Without Filter**



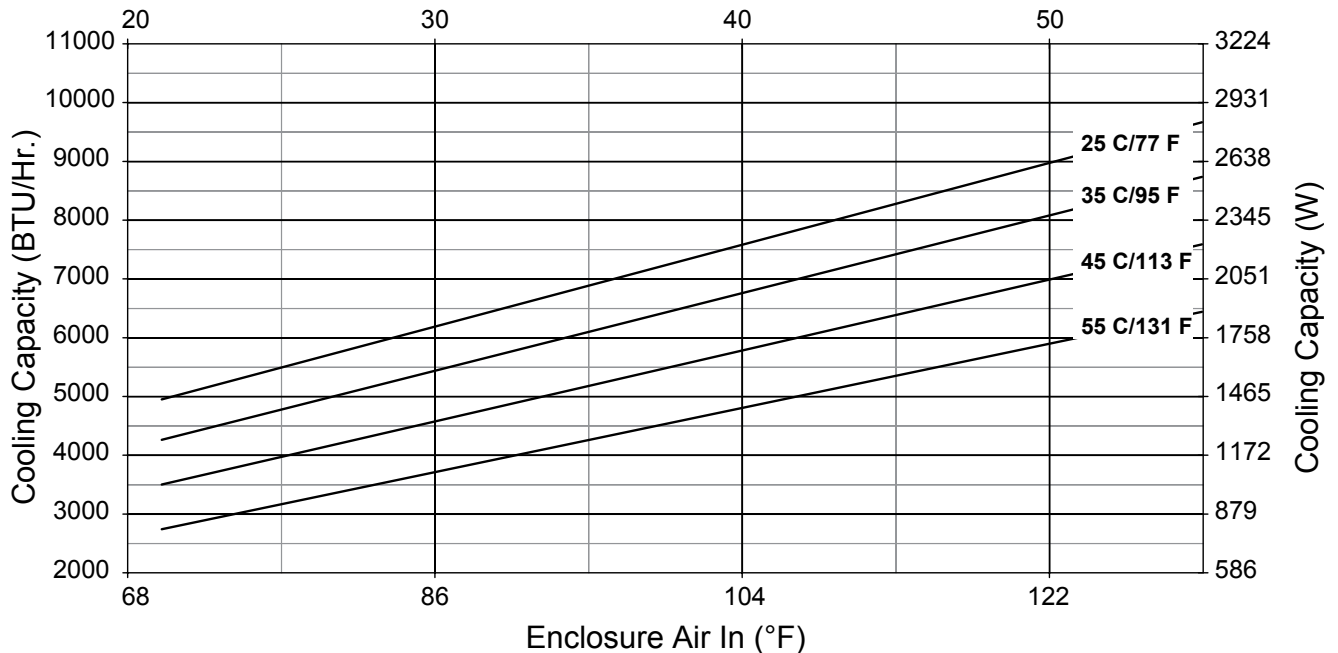
**SPECTRACOOL™**

Performance Curves for G28 Models 6000 BTU/Hr. (1758 Watt)

**G28-06(1/2)6-GXXX Capacity Curves at 50Hz Without Filter**  
Enclosure Air In (°C)



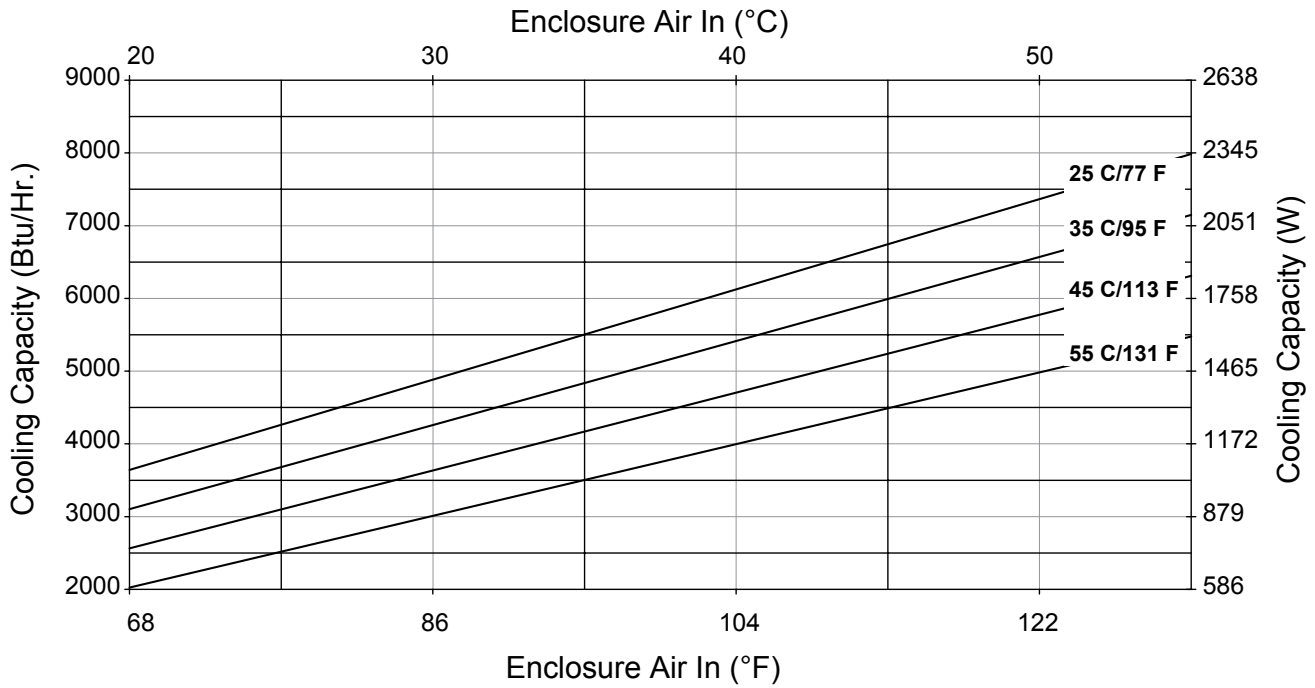
**G28-06(1/2)6-G002-P#2 Capacity Curves at 60Hz Without Filter**  
Enclosure Air In (°C)



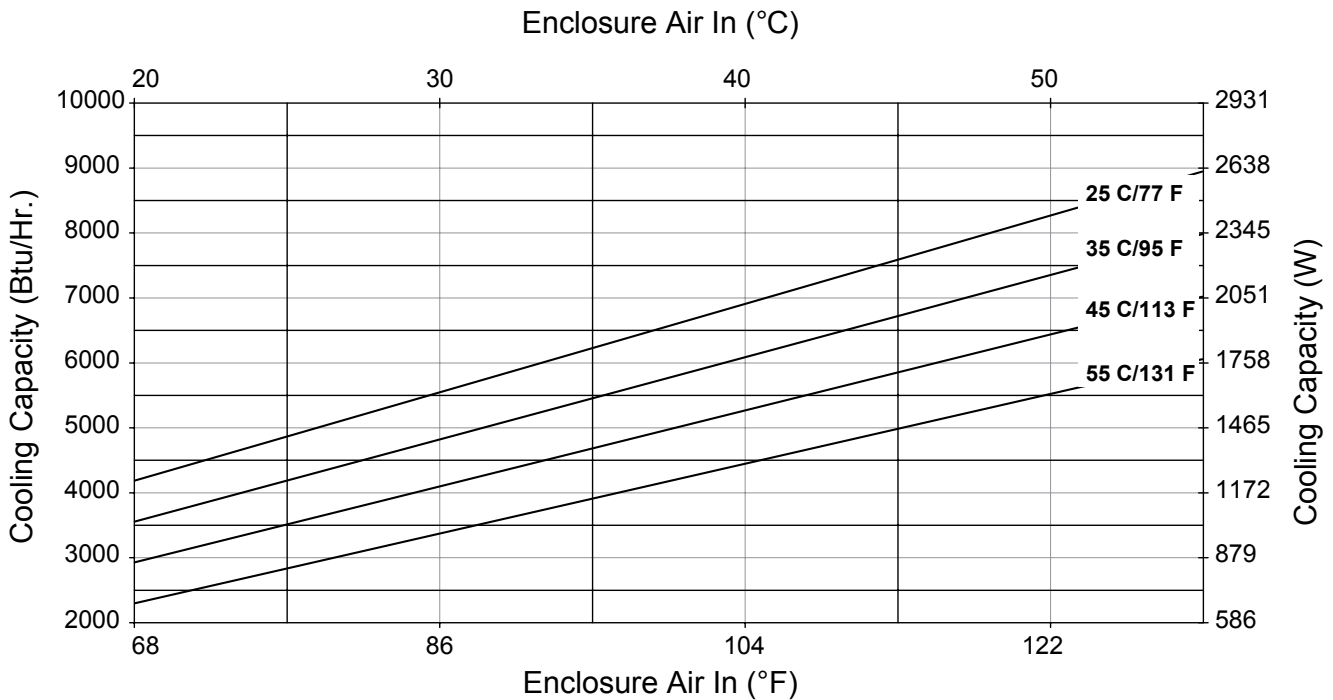
**SPECTRACOOL™**

Performance Curves for G28 Models 6000 BTU/Hr. (1758 Watt)

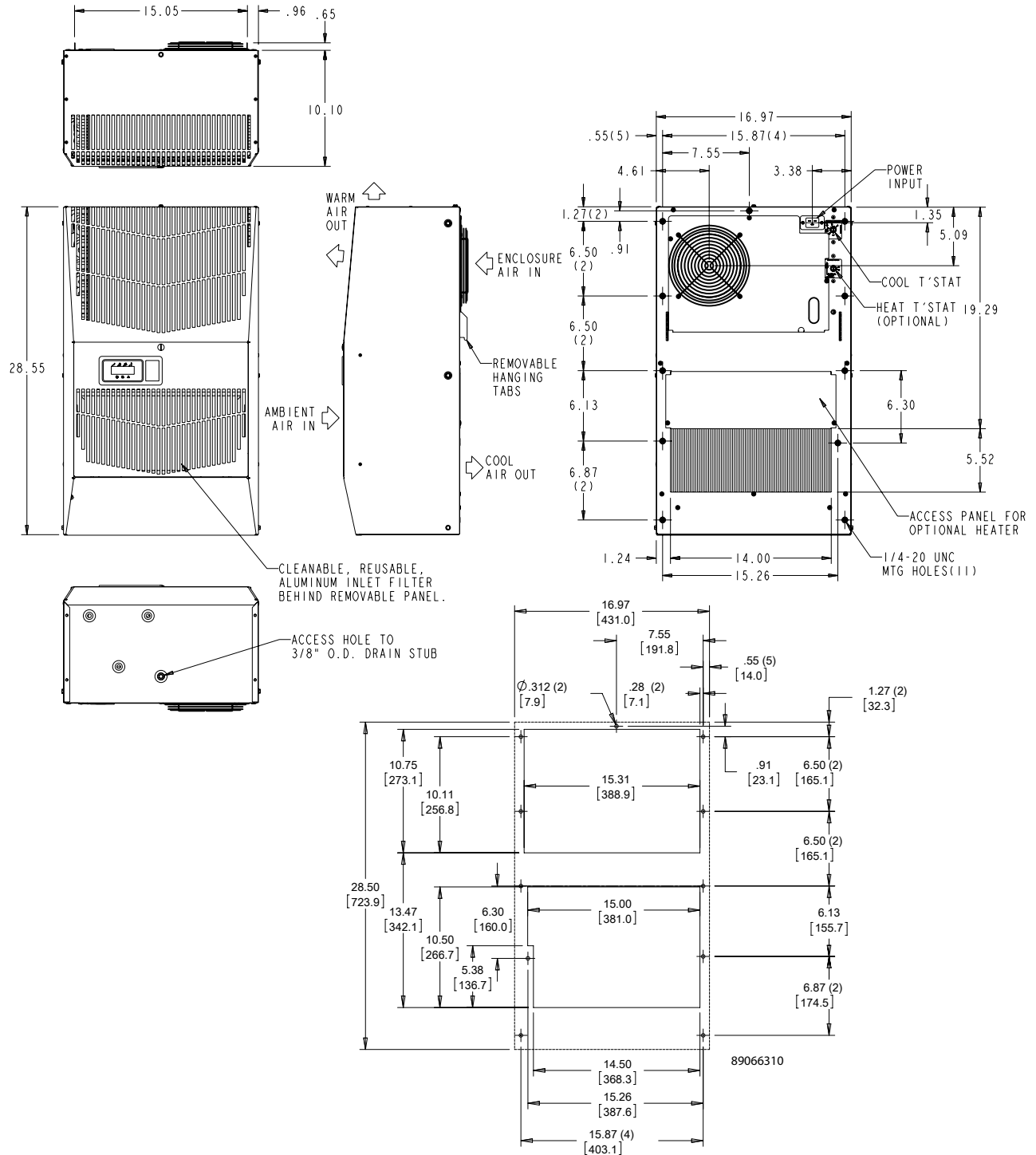
**G28-0646-GXXX Performance Curve 400VAC/50Hz Without Air Filter**



**G28-0646-GXXX Performance Curve 460VAC/60Hz Without Air Filter**



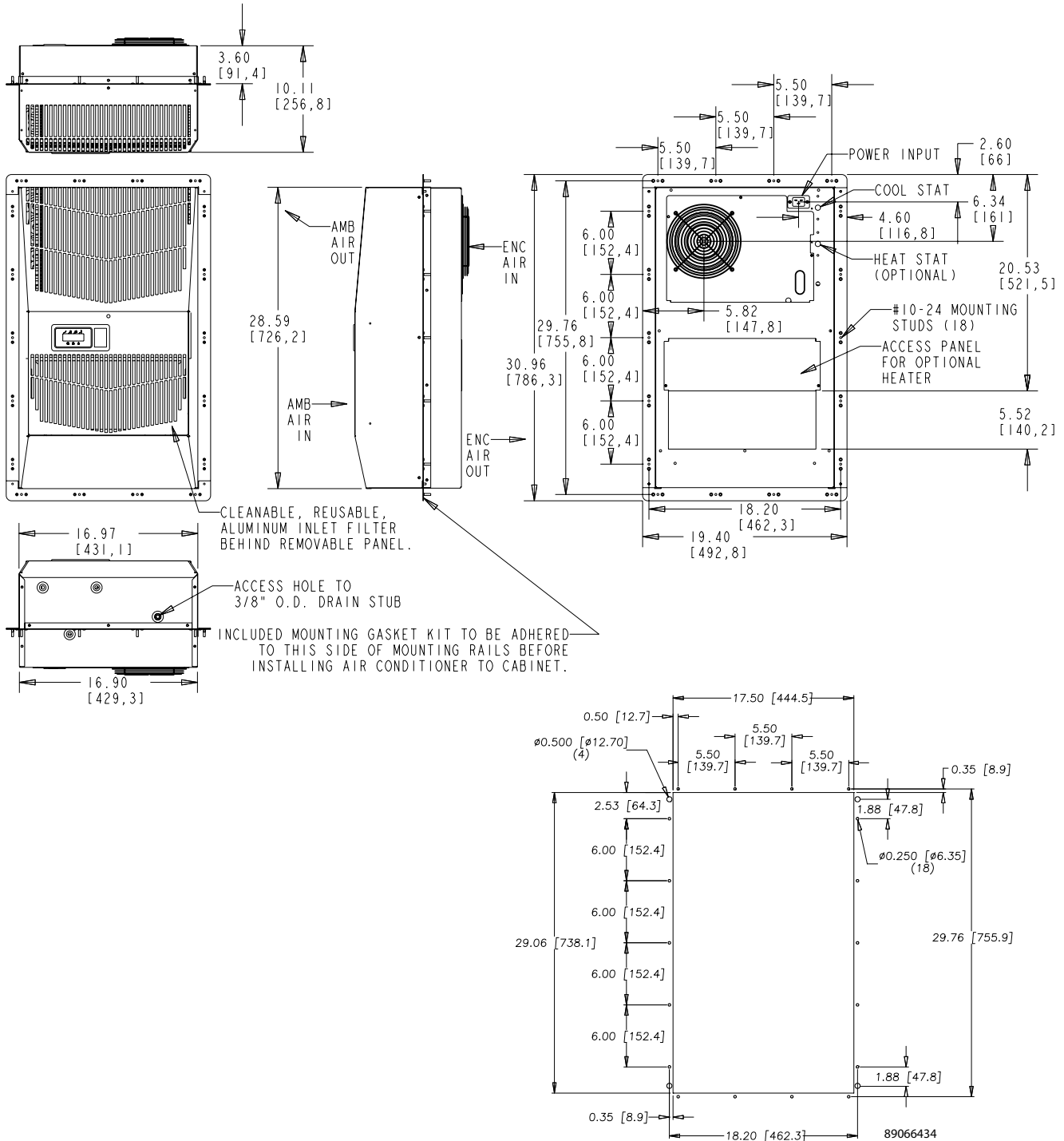
G28 Models 4000/6000 BTU/Hr. (1172/1757 Watt)



**CUTOUT INSTRUCTIONS**

**SPECTRACOOL™**

G28 Models 4000/6000 BTU/Hr. (1172/1758 Watt) With Partial Recess



**CUTOUT INSTRUCTIONS**

Visit [www.McLeanCoolingTech.com](http://www.McLeanCoolingTech.com) to download 2D and 3D CAD drawings into the overall design of your electronic system.