

## East Union Lutheran Church

15180 County Road 40

PO Box 283

Carver, MN 55315



## EAST UNION LUTHERAN CHURCH

Carver, Minnesota

[www.eulc.org](http://www.eulc.org)

952-448-3450

### Sunday Worship Schedule

**9:00 a.m.**

#### **Worship**

with Holy Communion on 1st, 3rd,  
and 5th Sundays

**10:00 a.m.**

**Coffee Fellowship & Sunday School**

# February 2026

## East Union Lutheran Church

Sunday	Monday	Tuesday	Wednesday	Thursday	Friday	Saturday
<b>Pastor Bryant's Office Hours:</b> Mon—Wed 8:30am-Noon <b>Darcy's Office Hours:</b> Tues & Thurs 9am-1pm						
<b>1 "Letting Go"</b> 9am Worship-Communion 10am Fellowship 10am Sunday School	2	3 10am Bible Study	4 6:30pm Bible Study	5	6	7 10am Gathering Thru Fellowship 4-6:30pm Spaghetti Dinner & Silent Auction
<b>8 "Enriched"</b> 9am Worship 10am Fellowship 10am Sunday School	9 1pm Quilting Group 7pm Dahlgren Township Mtg	10 10am Bible Study	11 1-7pm Red Cross Blood Drive	12	13	14
<b>15 "Transformed"</b> 9am Worship-Communion 10am Fellowship	16	17 10am Bible Study 6:30pm Council Meeting	18 <b>East Union</b> 6pm Lent Dinner 7pm Ash Wednesday Worship	19	20	21
<b>22 "Tested"</b> 9am Worship 10am Fellowship 10am Sunday School	23 1pm Quilting Group	24 10am Bible Study	25 6pm Lent Dinner 7pm Worship	26	27	28

## Words from Pastor Bryant

Dear Disciples,

Do you have a to-do list for today? For this week? A list that is perhaps littered with wants and needs, hopes and dreams, and things you can't wait to do and also things you're dreading?

My list for the day looks something like this: Walk a kid to the bus stop in sub-zero temperatures. Fill up the car with gasoline. Make a quick stop at the grocery store. Play piano for memory care residents. Read commentaries and work on a sermon. Make dinner. Watch a youth hockey practice. Go to bed.

Of all those items, I'm perhaps most looking forward to watching my kid out on the ice with her teammates. If I could skip to any one item on that to-do list, it might just be that one. In fact, I'm guessing that as I'm putting gas in the car, standing out in the frigid weather, I'll probably be looking forward to getting inside the warm grocery store after that.

And, as I'm in the grocery store, I'll probably be looking forward to being done with the shopping so I can move on to the next thing on the list. Some days, it would seem, it feels like I'm checking off items on the to-do list simply so I can get to the next one—or at least get to the one I'm looking forward to the most.

But, is this how we've been called to live? Rush through moments of our lives simply to get to the next one? Perhaps instead of viewing our daily lives as a check-list to venture through, we could view those to-do items as opportunities.

That is, in a sense, what this season of Epiphany is all about: experiencing the revelation of Jesus in the everyday moments of our lives. Now, that experience of Jesus won't happen all at once, but instead within particular moments. Moments that we can't skip or rush, but instead once that we have been called to embrace.

It's certainly difficult work—to be on the lookout for where Jesus is showing up in our lives (especially in the mundane moments). But, it is the promise of this Epiphany season. There's no need to rush ahead to tomorrow or an event later today to find Jesus. For he is present right here and right now—revealing his life-giving presence in this moment.

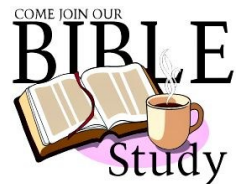
Peace,  
Pastor Bryant

## February Theme

Our theme for this month is ***Beginnings***. The start of Jesus' ministry is filled with opportunities to see and hear and experience the living God. We, too, in this Epiphany season, are called to reflect on how Jesus is revealing himself in the daily moments of our lives. For no matter the time or the place or the situation, Jesus is present--surrounding us with life and love!

## Tuesday Bible Study

Bible Study continues every Tuesday morning at 10am in the Parish Center. All are welcome!



## Wednesday Bible Study

Bible Study will meet at 6:30pm on February 4th. The Wednesday group will resume meeting on April 8th for a 4-week series.



**SUNDAY  
SCHOOL**

## Sunday School

Classes are held for children ages 3 through grade 5 on Sundays from 10am-11am.

### Schedule

2/1/26 Sunday School

2/15/26 No Sunday School

2/8/26 Sunday School

2/22/26 Sunday School

## Gathering Thru Fellowship

We are looking forward to our next gathering on February 7th at 10am in the Parish Center. We will be making snowmen. All are welcome to participate or visit!

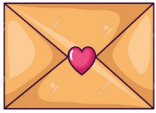
## Spaghetti Dinner & Silent Auction

We are excited for our Spaghetti Dinner on February 7th. If you have any last minute donations, please drop them off at the Parish Center. We also need volunteers to help in the kitchen on the day of our event and people to bring in desserts. Please sign up on the clipboard on Sunday or call the church office.



## Toilet Paper & Box Kleenex Drive

We are hosting a toilet paper and box Kleenex drive until February 8th. Please bring your donations to the Parish Center. We will be donating the Kleenexes to Carver Elementary and the toilet paper to Bountiful Baskets.



## Card Ministry Team

The Card Ministry Team is here for anyone in need of Christ's love through a card. The Team will meet on February 11th & 25th at 8:30am.

## Red Cross Blood Drive

Would you like to save a life? Join us and the Red Cross on **Wednesday, February 11 from 1-7 pm** in the Parish Center! Sign-up on the Red Cross's website: <https://www.redcrossblood.org/give.html/drive-results?zipSponsor=eulc>



## Movie Premier

Come to the Carver City Hall on February 15th, at 5pm to hear interviews from Loren Huepenbecker, who will talk about the Carver Riverside Ballroom and Mike Shaw, who will talk about the Shaw Band that played at the Ballroom.

## Lent

### Ash Wednesday

- \* February 18 at East Union
- \* Dinner @ 6 pm
- \* Service @ 7 pm



### Maundy Thursday

- \* April 2 at East Union

### Good Friday

- \* April 3 at West Union

For the midweek services, we're doing things a bit differently this year. Each church will host a service each week, plus a dinner beforehand. So, East Union will host dinner at 6 pm and then host the Holden Evening Prayer at 7 pm (Feb. 25th-Mar. 25th). West Union will offer dinner at 6 pm at their place and then a family-friend style service at 7 pm. Folks can choose which site to attend.

**Lenten Meal Sign-up:** If you would like to help host a meal, call the church office or sign up on the clipboard on Sunday morning.

## Looking Into the Future:

- ♦ March 7—Gathering Thru Fellowship
- ♦ March 21—Feed My Starving Children
- ♦ March 29—Easter Egg Hunt
- ♦ April 26—Pancake Breakfast
- ♦ May 31—Carver Mayor talk during Fellowship
- ♦ June 23—Beth El Synagogue Visit
- ♦ August 9—Antique & Unique Car Show
- ♦ September 13—Steamboat Days Parade



## Card Ministry—Free Cards

Our committee has appreciated all the free card donations! We have an over abundance right now. There is a tote in the Parish Center for anyone who would like to give a card. Please take what you need.

## Craft Donations for Plant & Craft Sale

We are starting to think about our Plant & Craft sale in May. We are looking for craft donations to sell at our sale. Thank you.

## Tithely

Did you forget your offering? Tired of writing out checks? Are you out of town? Tithely is an easy way that you can contribute to East Union online. Your gift is safe and secure and goes directly to our church.



Use the QR code or go to [Tithe.ly Giving](https://tithe.ly/giving) to get started. Search for East Union Lutheran Church, select the link to “give now” and you are ready to go. Enter the amount you want to give, the fund you want to give to, select the frequency of giving, enter your contact details, and payment information to give.

You can create an account to track your gifts, set up recurring giving, and more. Reach out to Chris Hallin if you have any questions.



## Food Shelf Donations

Please remember our neighbors in need. There is a grocery cart in the Parish Center ready to accept donations for the local food shelves and for brown paper grocery bags as well as empty egg cartons. If you have extra, please put them in the grocery cart. Thank you for your donations!

**BOUNTIFUL BASKET**  
**CURRENT NEEDS - January 2026**



• Cereal (***)	• Mayonnaise
• Hearty Soup	• Flour, Sugar & Cooking Oil
• Crackers	• Baking mixes
• Canned Chicken, Tuna & Salmon	• Diapers (size 5 & 6)
• Canned Pineapple & Mandarin Oranges	• Toilet Paper
• White & Brown Rice	• Laundry Detergent
• Healthy Kid Snacks	• Dish Soap
	• Shampoo
	• Feminine Hygiene Products

We could also use your brown and plastic bags and empty egg cartons!

## Current Trends & Trivia in Music

- **Christian Music is "Pop" Now:** For the first time in 11 years, Contemporary Christian Music songs are breaking into the Billboard Hot 100 all-genre Top 40, directly competing with secular artists. This shift is led by artists like Forrest Frank and Brandon Lake.
- **Younger Listener Surge:** The audience for Christian music is skewing younger, with millennials and Gen Z making up 45% of the listenership in 2024, up from 39% in 2022.
- **Massive Reach:** Approximately 54 million adults in the U.S. listen to Christian and Gospel music multiple times a week.
- **Mozart vs. Beyoncé:** In 2016, Mozart actually sold more CDs than Beyoncé, Adele, and Drake.
- **The Longest Note:** Morten Harket, the lead singer of A-ha, holds the record for the longest single note in a pop song—a 20.2-second note in "Summer Moved On" (2001).
- **Did you know?** Singing with others releases oxytocin, reducing stress and boosting happiness.

## Quote of the Month

"Be a fountain, not a drain."

~ Rex Hudler

# FUN FACTS ABOUT VALENTINE'S DAY

According to Hallmark, approximately 145 million cards are sent on Valentine's Day. This makes it the second most card-sending holiday of the year, right after Christmas. Teachers receive the most Valentine's Day cards annually.



Heart-shaped chocolate boxes were introduced in the 1860's by the Cadbury brothers. Today there are more than 35 million heart-shaped boxes of chocolate sold each year for Valentine's Day.

Conversation hearts began as medical lozenges and date back to 1847. They were used as a sore throat remedy. Daniel Chase discovered a way to print messages on the candy in 1866.



Valentine's Day is a florist's busiest day of the year. In 2022, 22% of Americans bought flowers or plants for Valentine's Day. People usually buy red roses on Valentine's Day as this color symbolizes passion and romance. Around 250 million roses are grown each year for Valentine's Day.

Valentine's Day is celebrated differently around the world. Brazil celebrates its version of the day in June. The Czech Republic honors "Three Days of Love" in May. Finland honors friendship rather than romance on February 14. In Germany, couples exchange pig-shaped gifts and heart-shaped trinkets as symbols of love and lust.

For those without a significant other on Valentine's Day, you can celebrate International Quirkyalone Day on February 14. It celebrates romance, friendship and independent spirit.





# Spaghetti Dinner

**Hosted by East Union Lutheran Church**

# Spaghetti Dinner

**Saturday, February 7, 2026**

**4:00 – 6:30 p.m.**

## **Pricing**

**Adults \$15**

**Children (Ages 4-10) \$8**

**Ages 3 and under Free**



*Bring your family, friends  
and neighbors and support  
a great cause!*

**\*Take-out available**

**Vegetarian option available**

**East Union Lutheran Church**

**15180 County Road 40**

**Carver, MN 55315**

There will be something for everyone at this event. Baskets, gift certificates, and specialty items all up for bid. Dinner includes: spaghetti with homemade sauce, salad, bread, beverage, and homemade desserts.

**\* Silent Auction closes at 6:15pm. Need not be present to win.  
Proceeds are used for our Youth Programs. Thank you for your support!**