

East Union Lutheran Church

15180 County Road 40

PO Box 283

Carver, MN 55315



EAST UNION LUTHERAN CHURCH

Carver, Minnesota

www.eulc.org

952-448-3450

Sunday Worship Schedule

9:00 a.m.

Worship

with Holy Communion on 1st, 3rd,
and 5th Sundays

10:00 a.m.

Coffee Fellowship & Sunday School

February 2025

East Union Lutheran Church

Sunday	Monday	Tuesday	Wednesday	Thursday	Friday	Saturday
Pastor Bryant's Office Hours: Mon—Wed 8:30am-Noon Darcy's Office Hours: Tues & Thurs 9am-2pm						1 10am Gathering Thru Fellowship
2 "Waiting" 9am Worship-Communion 10am Fellowship 10am Sunday School	3	4 10am Bible Study	5 8:30am Card Ministry 6:30pm Bible Study	6	7	8 4-6:30pm Spaghetti Dinner & Silent Auction
9 "Called" 9am Worship 10am Fellowship 10am Sunday School 10am Outreach Meeting	10 1pm Quilting Group 7pm Dahlgren Township Mtg	11 10am Bible Study	12 1-7pm Red Cross Blood Drive 6:30pm Bible Study	13	14	15
16 "Blessed" 9am Worship-Communion 10am Fellowship 10am Visitation Group Meeting	17	18 10am Bible Study 6:30pm Council Meeting	19 8:30am Card Ministry 6:30pm Bible Study	20 9am-5pm Quilt Retreat	21 9am-5pm Quilt Retreat	22
23 "Relationships" 9am Worship 10am Fellowship 10am Sunday School	24 1pm Quilting Group	25 10am Bible Study	26	27	28	

Words from Pastor Bryant

Dear Disciples,

The sun is shining, but it's freezing cold. There's plenty of light, but the days are short. There's warmth out there, but the wind takes it away. In life, there always seems to be a give and take, a push and pull. And, to be honest, it can be hard to appreciate the sun's light and warmth when winter's darkness and chill seems to overpower. It can be hard to recognize the good when the not-so-good always seems to hover around us.

In other words, it can be hard to discern exactly what God is up to in our lives and where we're being called to live out Christ's words and actions at times. We know the calling and purpose is out there, but how exactly do we find it? How do we recognize it, claim it as ours, and move forward with it?

This is a personal example, but hopefully it provides a bit of clarity for your own discernment purposes. Part of what I do on a weekly basis is study the biblical text. Spend time with scholars and commentators who have mulled the text over and come to particular conclusions. And then with the Spirit's help, hopefully what comes forth from all of that time spent with the text is a sermon and message that is fruitful for you each and every Sunday.

Here's the thing, though: I'm never quite certain with how the Spirit is working from week-to-week. And, even more frustrating, is this revelation I've come to understand during my ministry: there are some sermons I'm not too fond with after setting the pen down at the end of the week. Plenty of sermons where I think to myself, "This isn't what I'd like it to be. I wish it could be better, more inspiring, more of what the Spirit wants to say and less of what I want it to say."

There are plenty of Sunday mornings where the sun is bright and warm, but all I can feel from a week's worth of study is how long the night is and how cold the day is. In other words, it feels like I spent a week not finding or recognizing God's presence—some weeks it feels like I missed the mark.

But, here's where God has a good sense of humor. More often than not, the Sundays where I thought I struck out with a sermon, those are the Sundays God reminds me that God can make good happen from anything. Those are the Sundays, the ones where I think I didn't accomplish anything good or do what God wanted me to do—those are the Sundays where you let me know how much the Spirit spoke to you.

Just when I thought I failed to live into my calling for the week, God reminded me: when the Holy Spirit is at work, there is no such thing as failure—God can make wonders from anything. So, the next time you're wondering what God has called you to do or on the days where it seems like you haven't fully grasped or recognized God's presence in your life, just remember this: God's always there. God's always at work. And no matter where you find yourself, you'll be accomplishing God's purpose for your life and the life of the world.

Because when we step out in faith, God takes care of the rest.

Peace—Pastor Bryant

Bios from New Council Members

Congratulations to our new 2025 council members: Cheryl Hubbard, Jamie Scott & Barb Steers. Please see below a short bio about them.

Cheryl Hubbard

After working 29 years for an international company in Minneapolis, I retired moving to Carver to share a home with my daughter Jamie Borgstrom and her family. I received an invitation to attend East Union from fellow Carver Lions member Evelyn Grimm in May 2023. East Union has provided for me opportunities in worship for spiritual growth, bible study to gain knowledge and insight. The card ministry teaches me to be creative and the outreach committee provides service and share God's love with others. I look forward and am excited to be working with the church council. We are blessed as a church community to call East Union home.

Jamie (James) Scott

I was born into East Union Church. My family origins go back to EULC's very 1st pastor, Pehr Carlson. His brother Andrew John (AJ) was my Great, great, grandfather. I'm a retired machinist and a jack of all trades. I'm on the property, decorating, AV, finance committees/Teams and parsonage task force. I, my wife Lori, and a GREAT TEAM run the annual Plant Sale. (Saturday of Mother's Day weekend). I also spend many volunteer hours at the Scott Carver Threshers. Lori and I live just south of the Bongards cheese factory. Between us we have 5 children and 3 grandchildren.

Barb Steers

I have lived in Carver since 2003 and have been a member of East Union Lutheran Church since 2005. I have been involved in the music program at EULC since 2006 in various capacities. I began partnering with the former organist, Gay, in 2011, and assumed the role when she retired in June of 2013. I have been the Treasurer for EULC since 2017. My full-time job outside of the church includes complex finances for various companies as well as a background as a legal assistant. In my free time, I enjoy yard work, reading, jigsaw puzzles, exercise and fitness, and spending time with family and friends.

February Theme

Our theme for this month is **Discipleship**. Together, we witness the beginnings of Jesus' ministry and we see what it means to follow him. We take stock of the sacrifices and blessings we receive when we follow in Jesus' footsteps and we're reminded of who we're called to minister to: all people.

Tuesday Bible Study

Bible Study continues every Tuesday morning at 10 a.m. in the Parish Center. All are welcome!



Wednesday Bible Study

All are welcome to Wednesday Evening Bible Study, We are studying the book of Esther. Schedule is:

2/5/25 Bible Study

2/19/25 Bible Study

2/12/25 Bible Study

2/26/25 No Bible Study



Sunday School

Classes are held for children ages 3 through grade 5 on Sundays from 10am-11am.

Schedule

2/2/25 Sunday School

2/16/25 No Sunday School

2/9/25 Sunday School

2/23/25 Sunday School

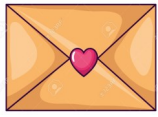
Vacation Bible School

Mark your calendars! East Union VBS will be held from 7/28 thru 7/31. Grades K-5th grade are eligible. Volunteers are needed. More information forthcoming.

Gathering Thru Fellowship

We will gather on Feb. 1st at 10am in the Parish Center. We will be making shadow boxes. If you have a favorite picture or saying to fit into the box, bring it along. Dimensions are 4 1/4 square or 5 X 4 1/4, supplies will be provided. All ages are welcome to visit or create.





Card Ministry Team

The Card Ministry Team is here for anyone in need of Christ's love through a card. The Team will meet on February 5th & 19th at 8:30am.

Spaghetti Dinner & Silent Auction

We are excited for our Spaghetti Dinner on February 8th. If you have any last minute donations, please drop them off at the church office. We also need volunteers to help in the kitchen on the day of our event and people to bring in desserts. Please sign up on the clipboard on Sunday or call the church office.



Toilet Paper & Box Kleenex Drive

We are hosting a toilet paper and box Kleenex drive until February 9th. Please bring your donations to the Parish Center. We will be donating the toilet paper to Bountiful Baskets and the box Kleenex to Carver Elementary.



Red Cross Blood Drive

Would you like to save a life? Join us and the Red Cross on **Wednesday, February 12 from 1-7 p.m.** in the Parish Center by giving blood! Sign-up on the Red Cross's website: <https://www.redcrossblood.org/give.html/drive-results?zipSponsor=eulc>

Visitation Group

The Outreach Committee is looking for volunteers to join a visitation group. There will be an info and training meeting on February 16th at 10am. If you are interested, please come to the meeting.

Quilt Retreat

The quilting group is hosting a retreat on February 20th & 21st from 9am-5pm each day. If you are interested in joining, please call the church office, cost is \$10 per day. Bring your own lunch.



Lent

We are looking forward to worshipping with our Sister church West Union again this year. If you would like to help host a meal, call the church office or sign up on the clipboard on Sunday morning. Here is an outline of the Lenten Season.

Ash Wednesday

- March 5 at West Union
- Dinner @ 6 pm
- Service @ 7 pm



Midweek Lenten Services (*March 12, 19, & 26 @ East, April 2 & 9 @ West*)

- Meal @ 6 pm, Fellowship Hall
- Service @ 7 pm, Sanctuary
- Service structure: Holden Evening Prayer



Maundy Thursday

- April 17 @ 7 pm at West Union

Good Friday

- April 18 @ 7 pm at East Union

Looking Into the Future:

- ♦ March 1st—Gathering Thru Fellowship
- ♦ March 5th—Ash Wednesday
- ♦ April 13th—Palm Sunday
- ♦ April 20th—Easter
- ♦ May 10th—Annual Plant & Bake Sale
- ♦ May 26th—Honor Guard Memorial Day Service & Breakfast
- ♦ July 28th-July 31—Vacation Bible School

Share Campaign

When viewing East Union Facebook notices or worship services, please press the share button. This is an easy way to share our events with friends and neighbors.

Tithely

Tired of writing out checks? Are you out of town? Tithely is an easy way that you can contribute to East Union online. Your gift is safe and secure and goes directly to our church. Go to <https://give.Tithe.ly/my-church> to get started. Search for East Union Lutheran Church, select the link to “give now” and you are ready to go. Enter the amount you want to give, the fund you want to give to, select the frequency of giving, enter your contact details, and payment information to give.

Select “sign up” to create an account to track your gifts, set up recurring giving, and more. Reach out to Chris Hallin if you have any questions.

Food Shelf Donations



Please remember our neighbors in need. There is a grocery cart in the Parish Center ready to accept donations for the local food shelves. There is also a need for brown paper grocery bags. If you have extra, please put them in the grocery cart as well. Thank you for your donations!

Great News for Carver County Residents

For all of you like me missing the local newspaper, Carver County now has a new, free, online newspaper! It’s called **“Carver County Local News.”** The paper is a non-profit, non-partisan media organization covering news, events, stories, etc. from Chaska, Carver, Chanhassen, Victoria and Carver County in general. To find the newspaper, go to this link: cclocalnews.org and subscribe for free!

Minnesota Landscape Arboretum—Spring Flower Show

Welcome to the enchanted gardens of the Spring Flower Show! Open daily from February 1 – March 16, 9:00 a.m. – 4:00 p.m. Feb. 1-28 and 9:00 a.m. – 6:00 p.m. March 1-16 in the Oswald Visitor Center and Snyder Building. Admission to the Spring Flower Show is included with general daily admission. Feb. tickets are on sale now and March tickets go on sale Jan. 31. You'll marvel at more than a dozen intricate displays representing enchanted spring gardens. Tempt your senses with fragrant blooming flowers and lush green plants as you wander past bubbling fountains, aromatic herbs, mushrooms in various stages of growth and the tiny world of fairy houses.



Chaska Community Center Upcoming Events

Puzzle Bowl

February 8, 2025 | 1:00 to 3:00 PM | Carver Village Hall | 316 Broadway St, Carver, MN 55315 | \$30 per team

Gather your team of puzzlers and join us for the Puzzle Bowl, our first-ever Jigsaw Puzzle Challenge! Teams of two to four members will compete to finish a 500-piece puzzle in the shortest amount of time. The puzzle will be provided, and teams will get to keep their puzzles. Prizes will be awarded to top finishers.

CCC Carnival

March 7, 2025 | 5:30 to 7:30 PM at the Chaska Community Center

Get ready to ROAR with excitement at the CCC Carnival! Step back in time and join us for a prehistoric adventure like no other! Bring the whole family (especially your grandkids) to enjoy dino-themed games, jump in the inflatable jumper, and more! All ages are welcome.

The Lodge at Chaska Community Center

Be Sure to Check out The Lodge at the Chaska Community Center. The Lodge serves the AOA (Active Older Adults) population ages 55 and older. There is no fee to use The Lodge amenities including computer kiosk, kitchen, large gathering space, library, outdoor patio and pool table. There's weekly cards, cribbage, bingo, free Medicare counseling, Colhapp Discussion Group (discuss current events), driver safety classes, book club and much more! Phone: 952-448-2023



FUN FACTS ABOUT VALENTINE'S DAY



1. Americans purchase in the ballpark of 58 million pounds of chocolate for Valentine's.
2. Americans spent approximately \$25.9 billion (yes, with a "B") on Valentine's-related purchases in 2023 and that number is projected to be \$25.8 billion in 2024. This is because jewelry is a popular Valentine's Day gift.
3. The most popular gift on Valentine's Day is flowers, especially roses.
4. Necco Sweethearts (conversation hearts – little hearts with words written on them) were invented in 1866. Each box has approximately 45 sayings—including "True Love," "Hug Me," and "You Rock"—but you can personalize your own, too. And about 10 new sayings are added each year. More than 8 billion are manufactured each year. They have to start making them just days after February 14 to have enough in time for the next Valentine's Day. That's almost 100,000 pounds per day. But don't worry if you still have last year's box — they have a shelf life of five years! (I sometimes think they taste like they have been around 5 years too!)
5. King Henry VII of England declared St. Valentine's Day a holiday in 1537.
6. Why is the color red associated with Valentine's Day? Red is the color of blood. It was once believed that the heart is the part of the body where your feelings (and therefore love) come from.
7. During the Middle Ages, men and women would pick names out of a bowl, and the person's name they drew would be considered their Valentine. They would wear that person's name on their sleeve for a week; this is where the saying "wearing your heart on your sleeve" comes from.

Spaghetti Dinner Flyer

Hosted by East Union Lutheran Church

Spaghetti Dinner *and Silent Auction*

Saturday, February 8, 2025

4:00 – 6:30 p.m.

Pricing

Adults \$12

Children (4-17) \$7

Ages 3 and under Free



*Bring your family, friends
and neighbors and support
a great cause!*

***Take-out available**

**Gluten free & vegetarian
options available**

East Union Lutheran Church

15180 County Road 40

Carver, MN 55315

There will be something for everyone at this event. Baskets, gift certificates, and specialty items all up for bid. Dinner includes: spaghetti with homemade sauce, salad, bread, beverage, and homemade desserts.

*** Silent Auction closes at 6:15pm. Need not be present to win. Proceeds are used for our Youth Programs. Thank you for your support!**