

OUR SAVIOR'S LUTHERAN CHURCH

Phone: (925) 283-3722 ❖ Email: spirit@oslc.net ❖ Webpage: www.oslc.net

EPIPHANY 2022

WHO WE ARE

We are a community grounded in the life and teachings of Jesus.

- We embrace an open approach to every spiritual journey.
- We ask questions together and value every voice.
- We strive for justice through service to the world.

We seek to be transformed by the path we walk together.

WE ARE A RECONCILING IN CHRIST CONGREGATION

We are a community embraced by the mystery of God's love for all creation.

We look for the Christ shining in every race, every child and family shape, every sexual orientation and gender identity, every physical and mental ability, every economic status, and every faith perspective. Within this dynamic community, we foster meaningful connections and experiences as we live into faith and face the issues of our time.

Together, we strive to live with loving hearts, open minds, and hands extended to all.

"... for all of you are one in Christ." – Gal. 3:2

THE LIGHT BULB COMES ON!

Epiphany is known as the season of light. An epiphany is also, as defined by the Merriam-Webster dictionary, "a moment in which you suddenly see or understand something in a new or very clear way." In cartoons, when a character has an epiphany, we often see a light bulb above the character's head suddenly switch on – and that is exactly what Epiphany is for us. It's no accident that Epiphany comes after the twelfth day of Christmas. In the Advent season, we wait for the light. In the Christmas season, we are surrounded by the light. In Epiphany, we are illuminated (in every way) by the light, better understand the light, and begin to shine ourselves, reflecting Christ's light in the world.

PRELUDE

see insert

SERMON

Please rise as you are able

WELCOME

Please rise as you are able

OPENING DIALOG

L In the beginning, God created the heavens and the earth; it was a formless void, and darkness covered the deep. And God said, "Let there be light!"

And there was light!

In our dark moments, when we become painfully aware of the shadows that surround us, God opens our eyes to new possibilities.

The true light, Jesus, came into the world. The light shines in the darkness, and the darkness did not overcome it.

Epiphany is the season of light. As we enter a new year and continue our life's story, as we deal with challenges, pursue goals, fail or succeed, may we always remember that we are led by a holy light.

Light our way, and open our eyes to new possibilities, that we may have epiphanies of our own, discovering who we are meant to be.

HYMN

see insert

PRAYER

The community is seated

L PSALM *read responsively*

see insert

Please rise as you are able

GOSPEL ACCLAMATION

see page 4

L GOSPEL READING

The community is seated

L PRAYERS OF THE PEOPLE

After each petition:

O God who opens our eyes and lights our way,

Hear our prayer.

L THE LORD'S PRAYER

**Our Father in heaven,
hallowed be your name,
your kingdom come,
your will be done,
on earth as in heaven.**

**Give us today our daily bread.
Forgive us our sins
as we forgive those
who sin against us.**

**Save us from the time of trial
and deliver us from evil.
For the kingdom, the power,
and the glory are yours,
now and forever.
Amen.**

L THE PEACE

May peace, light and grace be with you.
And also with you.

On communion Sundays, January 9 and February 6, go to the Communion section of the bulletin (next page).

ANNOUNCEMENTS

Please rise as you are able

HYMN

see insert

DISMISSAL

L The light bulb comes on!
**New insights to give us
inspiration for the journey.**
This little light of mine
I'm gonna let it shine!
Now go into the world and let the
light within you beam brightly.
Thanks be to God.

DISMISSAL

L The light bulb comes on!
**New insights to give us
inspiration for the journey.**
This little light of mine
I'm gonna let it shine!
Now go into the world and let the
light within you beam brightly.
Thanks be to God.

POSTLUDE *see insert*

POSTLUDE *see insert*

**On communion Sundays: January 9
and February 6**

(for reflection after service)

A Creed for Epiphany, by Pastor Andreas
Wagner:

THE GREAT THANKSGIVING

P God is with us.
And God is within us.
Let us lift our voices in an act of
praise.
Great God, we praise you!
Let us thank God as well.
Thanks be to God forever.

I believe in God, the creator of the
universe,
Who spoke, "Let there be light!" and
there was light,
Setting in motion all of creation and
blessing it to this day.

I believe in Jesus Christ, the light of the
world
That shines in the darkness. The
darkness cannot overcome it.
He embodied humanity in the image of
God.
In kindness, truthfulness, humility, and
devotion,
He suffered for the greater good.
He showed us how to live life to the
fullest.

THE WORDS OF INSTITUTION

COMMUNION INSTRUCTION AND
DISTRIBUTION

DISTRIBUTION SONGS

Please join in singing

Here Is Bread ELW 483
I Come With Joy ELW 482

I believe in the Holy Spirit,
The guiding light of God in our world.
Through his spirit, God penetrates and
reveals
The darkness that can overwhelm us,
giving us
Light to help us grow and become who
we are meant to be.
I believe in the power of transformation
through this light.

PRAYER

ANNOUNCEMENTS

Please rise as you are able

Amen.

HYMN

see insert

©2017 Pastor Andreas Wagner.

All rights reserved. Used with permission.

GOSPEL ACCLAMATION

"DRAWN TO THE LIGHT"



Peo - ple who walk in dark - ness have sought a light in the



heart of the dark - est night. Just when we thought all would be



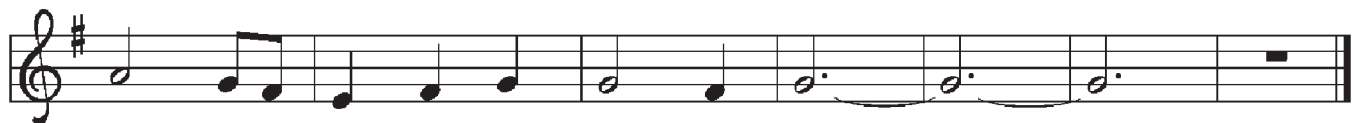
lost, we were drawn to the light of God.



Refrain
Dawn is in sight! Gone is the night, drawn to the



light and the morn - ing. Glo - rious and bright, oh, what a



sight to be drawn to the light of God.

**PLEASE RETURN THIS BOOKLET AFTER THE SERVICE SO IT MAY BE USED AGAIN
FEEL FREE TO TAKE HOME YOUR "PLEASE TAKE NOTE" INSERT**



PLEASE TAKE NOTE

February 6, 2022

Leading Worship Today

Worship Leader: Pastor Dan Senter
Lay Worship Leader: Mark Fenske
Pianist: Martin Morley
Song Leader: Dan Nelson

Prelude:

Bist du bei mir (Be Thou But Near)
Bach/Smith

Opening Hymn:

ELW 817 You Have Come Down to the
Lakeshore, verses 1 & 2

Psalm

Psalm 138 (see reverse)

Gospel Reading

Luke 5: 1-11

Final Hymn:

ELW 817 You Have Come Down to the
Lakeshore, verses 3 & 4

Postlude:

Theme from Piano Concerto in E-Minor
Chopin/Blake

Mission Outreach Team Update

Congregational giving has made possible these gifts to local and international ministries: Contra Costa Interfaith Council, Loaves and Fishes, Lutheran Social Services of Northern California, Monument Crisis Center, Pacific Lutheran Theological Seminary, Lutheran World Relief, and May-aCREW. Thank you!

A Call for Communion Volunteers

Is taking communion a meaningful experience for you? Then please consider becoming part of our team of Communion Stewards, who pair off to prepare communion and clean up after the service once a month. Our present team is mighty but small! We just need a few more volunteers. Please contact martin@oslc.net.

OSLC Poetry Hour on Zoom! Sunday, February 27, 4pm

Middle schoolers, high schoolers, and adults of all ages are invited to an hour of poetry writing time! We'll share different forms of poetry and let you try out your creative side. No experience necessary! We'll provide prompts and formats you can try. No need to share your writing unless you choose to! For questions, please contact youth@oslc.net.

Prayer Requests

Prayers of comfort for Sandi Healy in the passing of Marty Healy on January 9th, 2022.

If you would like to send a card or share a memory with the families of those who have passed, please call the church office for their addresses and phone numbers.

Join the Community Supported Agriculture (CSA) Movement

In a recent interview, Michael Palin noted that while we saw a spike in households sourcing their groceries through farmer's markets and CSA's, that trend line would probably soften as we move out of this pandemic. Linking your eating habits to locally grown food that supports organic farming, sustainable labor practices, and eliminates huge transportation, storage, and packaging costs is such a great way to support our local food shed. OSLC hosts three different CSA's on site, and they are booming! Visit the Creekside Commons page on the OSLC website to explore the options for fresh fruit, vegetables, fish, eggs, meat and more!

PSALM 138

I will give thanks to you, O LORD, with my whole heart;
before the gods I will sing your praise.

**I will bow down toward your holy temple and praise your name,
because of your steadfast love and faithfulness;
for you have glorified your name and your word above all things.**

When I called, you answered me;
you increased my strength within me.

**All the rulers of the earth will praise you, O LORD,
when they have heard the words of your mouth.**

They will sing of the ways of the LORD,
that great is the glory of the LORD.

**The LORD is high, yet cares for the lowly,
perceiving the haughty from afar.**

Though I walk in the midst of trouble, you keep me safe;
you stretch forth your hand against the fury of my enemies; your
right hand shall save me.

**You will make good your purpose for me;
O LORD, your steadfast love endures forever; do not abandon the
works of your hands.**