

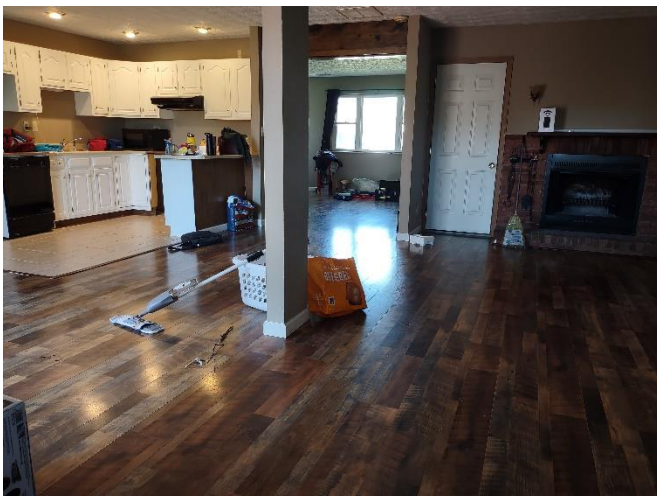
Yes, it's cancer, but ...

Yes, it's cancer, but... all cancers are not created equal. John has just been diagnosed with a non-aggressive, low risk form of prostate cancer that may not grow much in the next 10-12 years. There isn't even a tumor, just some random cancerous cells in one small portion of the prostate. The urologist calls it stage T1c cancer, another name for a type of stage II. John has decided that he will pursue active surveillance for his treatment. Under this plan, there will be periodic blood tests and biopsies to monitor the situation, but there will be no other forms of intervention (surgery, radiation, hormones) unless and until there is significant progression of the disease. All this comes as quite a shock to us, but we are managing.

A momentous month

We closed on a house in Xenia, OH on 13 April. We didn't move in until the 30th because we needed to paint and fix up the house. We also had no furniture, and the house did not come with appliances, so we had to get all those things. Some features of the house which appealed to us were: a separate room for John's office, an open kitchen, plenty of space to entertain visitors and overnight guests, a back deck, three adequately-sized bedrooms, a small walk-in closet, a fireplace, and two full bathrooms. The inspection revealed no major defects, and the process of lining up a mortgage and down payment went smoothly. The fixup is still an operation in progress, and we aren't fully settled yet, but we are able to live in the house. See our new address below. Our cell phone numbers and email addresses will remain the same. You are welcome any time you're in the Dayton-Cedarville, OH area. We are not far from the Air Force Museum, the Ark Encounter, and the Creation Museum as well as Cedarville University and beautiful state and county parks.

Before paint:



After: Bye-bye dark brown paint!



Praise

1. We were able to find new furniture at 60% off at a place going out of business the same day we closed on the house.
2. Equally, we found appliances at a discounted price and were able to have them installed without paying a lot. We're thankful for our son-in-law who helped us with many fix-it tasks.
3. Our house is roomy and all on the ground level. It doesn't have a yard that is too large to mow, but there is enough space for a garden and for grandkids to play in.
4. John's cancer is not life threatening, and he doesn't need major intervention for now.
5. We're still not far from Suzanne & Theo and their three children.

Prayer

1. Pray for healing for John or at least no progression of the cancer. His next tests will be in November. Pray for emotional, psychological, and spiritual health as well as physical health.
2. Pray for our support needs. While some new supporters have come on board over the past few months and some others have increased their support, some major supporters have had to drastically reduce or cease their support for us. This has happened as our support needs have increased. Currently, we're experiencing a shortfall of about \$600 per month. If you would like to join our support team, contact us or click on the support link below.
3. Pray that we'll settle in and be able to prioritize all the things we have to do. As many of you who have moved know, it's rather chaotic and disorienting for a while. We're still in the disorganized phase.
4. Pray for a ministry trip we'll be taking to CT 17-24 May. We'll be connecting with our sending church leadership, visiting John's mom (who turns 97 this month), and seeing supporters who might be available.
5. Pray we can keep up with our work at SIM in all the confusion and disorganization of moving and medical appointments. Nancy will begin doing SIM Niger Personnel correspondence and management later this month.