



St. Mary's Episcopal Church

9425 Third Ave., Stone Harbor, NJ 08247

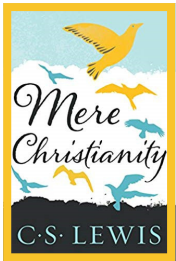
tel: 609-368-5922 fax: 609-967-1616

www.stmarysstoneharbor.org

facebook page: St. Mary's Episcopal Church



If you are a visitor to St. Mary's this morning, thank you for joining us for our services. Whether you are a single person, a couple, a family, married, partnered ... please be assured we want to recognize you. We ask a favor: kindly sign our guest book. Why? As you can guess, as a vacation destination, we greet people from all over! And we want to thank you for taking time to be with us. Bless you!

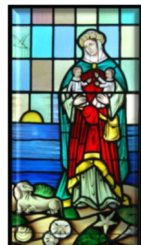


Did you know? There are various names for this Sunday: the *Second Sunday of Easter* (for those who like numbers); *low Sunday* (it's not about attendance!); *Doubting Thomas Sunday* (soon to be evident); *Quasi-modo Sunday* (kind of strange, don't you think?) For us in the Adult Form...it's *merely Sunday*. What's this all about? If you weren't able to attend this morning's Forum, you might want to ask someone who did. (9-9:45am in the chapel) Whatever you might call it ... we wish you a *happy Sunday!*



The news of bombings of packed churches and hotels on Easter Sunday in Sri Lanka reached us before our Easter services took place. That news reminds us that being a Christian in church on Easter Sunday, Christianity's most important day, does not guarantee God's protection, not even for that hour of worship. These terrorist attacks are among the atrocities that force the question that never goes away for people of faith: Why does God allow such things to happen? I recognize we have discussed this question in the Adult Forum ... but the last Sunday's Easter tragedy warrants our talking about this question again. (conTEXTS, Wednesday, 6:30 -7 :30 pm ... you are cordially invited.) **Please note:** this Wednesday, because of a meeting in the parish hall, we will meet in the chapel.

The rector's office stained glass window has been beautifully repaired and reinstalled. The work was done by J & R Lamb Studio. Many thanks to all who made donations to help with the cost!



Priest in Charge

The Rev. Canon Dr. Peter B. Stube

cell: 610-304-2539

e-mail: stmarysrector@hotmail.com

rectory: 609-830-5077

Assisting Clergy

The Rev. Dr. W. Kenneth Gorman

e-mail: k-gorman@comcast.net

David Joseph Condo, Music Director

e-mail: StMarysStoneHarbor@yahoo.com

Julie Taylor, Parish Administrator

e-mail: jultaylor9425@yahoo.com

This week at St. Mary's April 28, 2019

TODAY 9 am Adult Forum

MON 11 am Eucharist at The Branches

TUES 8 pm AA

WED 4 to 7 pm Project Resource
Stewardship Meeting

5 pm Choir

6:30 pm conTEXTS

FRI 10 am Alanon

SUN 9 am Adult Forum

Birthday Blessings to

Michael Hendee on April 22nd,

Andrew Johnston, Ronald

Lockhart, Jr., & James Darley on

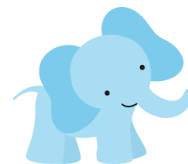
April 26th, Janice Haines & Bethany

Hagstette on April 27th, Margaret

Luedecke on April 28th, Shellie Tibbitts

on April 30th, and Alison Schellenger

on May 4th!



Congratulations and God's Blessings to

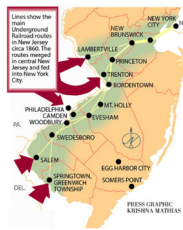
Kaylin and Joseph Bridgeman and big brother Bryce on the birth of Tucker Everett!

We have a card we would like to send to the family from St. Mary's parish family. If you would like to add your message and name, it is on the table in the parish hall.

The rose on the altar is in honor of Tucker's birth and will be taken to them with the card.

ST. MARY'S SENIORS LUNCH PROGRAMS

May's program will be an interesting presentation by Ted Bryan, Museum Educator with The Mid Atlantic Center for the Arts, Cape May and Retired History Teacher, on Thursday, May 9th at 11 AM. The topic will be **The Underground Railroad in Cape May County**. Bring a bag lunch, and a \$5 voluntary contribution to offset speaker fees. If you plan to attend, please sign up in the parish hall by Monday, April 29. We will need to have 10 people signed up to hold the program.



On June 12th, we will return to the Emlen Physick Estate for **Bach's Lunch** in the Carriage House Café & Tea Room. This delightful event includes a Wine Tasting,

lunch and a musical program by an ensemble from The Bay Atlantic Symphony. It will begin at 12 noon and end at 2 pm. Cost for the lunch and program is \$32 which includes a gratuity for the servers.

30 tickets have been reserved. A sign up sheet is on the parish hall bulletin board. Deadline for sign up is Monday, May 20th. Any unused tickets need to be released to the MAC organization for public sale after that date. Tickets for this event after that date may be available on a first come, first serve basis until the event is sold out.

Strawberry Festival

Jersey berries
are the best!

Please join us
Sunday, June 16th
6 to 8 pm

for strawberry desserts



Mark you calendar for St. Mary's berry delicious Strawberry Festival on Father's Day, June 16th. A sign up sheet is posted in the parish hall for desserts and kitchen help.

NEWS from the Stone Harbor Garden Club
Saturday, May 11, 8 am – 2 pm, and Sunday, May 12, 8 am to noon

Annual Plant Sale, Stone Harbor Firehouse

Saturday, May 11, 8 am to 2 pm

Annual Bake Sale

Thursday, May 16

Community Planting

Saturday, May 18, 8 am to 2 pm

Community Yard Sale, First Ave. & 96th St. Parking lot

Saturday, June 1, 12:30 – 4 pm

Annual Tour of Homes

FORWARD DAY by DAY devotionals in large and small print for May, June and July have arrived and are in the church narthex. Please help yourself.



St. Mary's This 'n That Thrift Shop is open and business is brisk. Winter items are on clearance and spring selections are available.

Please remember our thrift shop when you are spring cleaning. Your donations of gently used clothing, household items and furniture may be brought to the shops in Rio Grande or call for a pick up— 609-886-7272. Volunteers are always welcome. All proceeds from the thrift shop benefit St. Mary's outreach ministries.

St. Mary's This 'n That Thrift Shop is located in the The Village Shoppes, 1304 Rt. 47 So., Rio Grande.



ALTAR FLOWERS—There are many empty slots on the Flower Chart for the upcoming months. If you would like to give flowers in memory or honor of a loved one, please sign up on the chart and send a check to the church office in the amount of \$45 with "altar flowers" in the memo line. It's a wonderful way to honor family and friends throughout the year!