

Second Sunday of Advent
 December 4, 2016 • 9:00 a.m. Worship



Into the Wilderness with John the Baptist

East Union Lutheran Church
Carver, Minnesota

Worship Leaders for Sunday, December 4

- Ministers
 All the baptized!
- Organist
 Barb Wigness
- Preacher
 Tom Stutelberg
- Acolyte
 Ellynor Haas
- Lector
 Evelyn Grimm—Isaiah 11:1-10; Romans 15:4-13
- Altar Setup
 Rita Lundquist
- Ushers
 Rich Hurltig; Kent Hasse
- Communion Servers
 Tom Steers; Erica Wirtz
- Coffee Servers
 Dwight & Janet Schultz; Kent & Rochelle Hasse
- Dish Washers
 Mik Gusenius; Joan Abraham

Worship Leaders for Sunday, December 11

- Ministers
 All the baptized!
- Organist
 Barb Wigness
- Preacher
 Tom Stutelberg
- Acolyte
 Riley Haas
- Lector
 Kathy Coleman—Isaiah 35:1-10; James 5:7-10
- Ushers
 Paul & Jeanne Lundquist
- Coffee Servers
 Dave & Pat Timmerman
- Dish Washers
 Dwight Schultz; Stephanie Cardinal

Welcome to worship at East Union. Welcome visitors!

We are a congregation of the Evangelical Lutheran Church in America (ELCA). East Union is a community moving forward through grace, with the vision to be "A Wellspring of Faith, Hope, and Love"! Please sign the friendship pad located in the pew, near the center aisle, and greet one another. Sunday worship is at 9:00 a.m. with coffee fellowship and, during the school year, Sunday school at 10:00 a.m. Pew cushions are available from the ushers, as are headphones for those with hearing impairments. Newsletters detailing our congregational life can be found in the church entrance and in the next-door parish center, as well as at our Web site: www.eulc.org, where you will find much more information about our faith community.

East Union Lutheran Church

15180 County Road 40
 Carver, MN 55315
 Phone: 952-448-3450
 Parish office e-mail: castunionlc@gmail.com
 Pastor Tom Stutelberg e-mail: thomasthetwin@aol.com
 Brandy Meyer, Faith & Family Coordinator e-mail: castunionlc@gmail.com
www.eulc.org

***Gospel** Luke 3:1-6

Just before Jesus begins his public ministry, John the Baptist appears, calling people to mend their ways and speaking of a powerful one who is to come.

Children's Time with Pastor Tom

- Sermon** "Into the Wilderness with John the Baptist" **Pr. Tom**
- *Hymn of the Day-** "On Jordan's Banks The Baptist's Cry" **#249** **page 127**
- *Apostle's Creed**
- *Prayers of Intercession** (P: Lord, in your mercy, C: Hear our prayer) **page 127**
- * Peace**

Meal

Thankoffering

Offertory "We Give Thee But Thine Own"

***Great Thanksgiving** **page 152**

***Holy, Holy, Holy** **page 153**

***Words of Institution**

***Lord's Prayer** **page 154**

("Our Father, Who Art in Heaven," in right column)

Communion

You are invited to communion, regardless of your church background. To receive communion, hold out your hands for the wafer of bread, then either dip it in the chalice (one chalice holds the red wine; the other, the white grape juice) or take an individual cup (place the cup in the basket when you finish). If you have not yet received first communion, pastor will bless you.

Lamb Of God **page 154**

"O Come, O Come Emmanuel" **#257** vs. 1-4 **page 154**

"What Child Is This?" **#296**

"Lo, How A Rose" **#272**

Sending

- *Blessing**
- *Sending Song** "Hark, The Glad Sound!" **#239**
- *Dismissal**
- Postlude**

This divine service continues with coffee and fellowship in the parish center and then with service in the world.

Second Sunday of Advent

At the heart of our Advent preparation stands John the Baptist, who calls us to repent and make a new beginning. As the darkness increases we turn toward the light of Christ's coming. For Christians he is the root of Jesse, the righteous judge who welcomes all, especially the poor and meek on the earth. We wait with hope for that day when the wolf will dwell with the lamb, and there will be no more hurt or destruction. From the Lord's table we are sent in the spirit of John the Baptist to proclaim that in Christ the kingdom of God has come near.

*When marked with *, please stand as you are able. Liturgy is from Evangelical Lutheran Worship (ELW), or "cranberry" hymnal. "Pages" are in the front of the hymnal—follow the numbers at the bottom of the hymnal page. Songs use the hymn numbers at the top of the page.*

Gathering

Announcements

Call to Worship : The Wieland Family

Reading, Lighting of Advent Wreath, Hymn #240, v. 2

Ring the Bell

- *Confessions** (right column) **page 94**
- *Gathering Song-** "Come, Thou Long-Expected Jesus" **#254**
- *Greeting** ("The grace of our Lord Jesus Christ") **page 147**
- *Kyrle** ("In peace, let us pray to the Lord") **page 147**
- *Canticle of Praise** ("This is the Feast") **page 149**
- *Prayer of the Day** **page 150**

Word

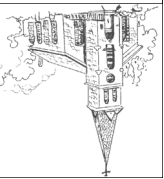
First Reading **Isaiah 11:1-10**

In today's reading the prophet describes the ideal ruler who will come in the future as a green shoot springing from a dead stump (David's royal line) of Jesse (David's father). Gifted by the Spirit, this messiah will seek justice for the poor, and the reign of this monarch will be experienced as paradise regained.

Choir "Lost In The Night" **(Kyle Haugen)**

Second Reading **Romans 15:4-13**

God's promise to include Gentiles within the circle of God's blessed people has been fulfilled in Jesus Christ. Christians live out their unity by welcoming and encouraging each other just as Christ has welcomed them into God's family.



East Union Lutheran Church

Weekly Announcements

Sunday, December 4 (Second Sunday of Advent)

ONE MINUTE STEWARDSHIP SERMON

Every faculty you have, your power of thinking or the moving of your limbs from moment to moment is given to us by God. C.S. Lewis

Four important principles of biblical stewardship.

The Principle of Ownership

God owns everything Psalm 24

The Principle of Responsibility

We are called as God's stewards to manage what belongs to God.

The Principle of Accountability

We will all give account to the rightful owner as to how well we

managed the things God has trusted to us.

The Principle of Reward

The bible shows us in the Parable of the Kingdom that faithful stewards who do the master's will with the master's resources can expect to be rewarded in this life and the next.

Thanks for your offering today!

PANCAKE BREAKFAST

The Youth & Education Committee is hosting a pancake breakfast on Sunday, January 15th from 7:30am –8:45am and 10:00am—12:00pm. Cost: \$7 adults, \$5 kids, 2 and under are free.

CHRISTMAS SHOPPING FOR PCYC

The Confirmation Students will be shopping TODAY for the Plymouth Christian Youth Center. We are taking donations today in the jars. Thank you for your donation.

PASTOR TOM'S RETIREMENT SCHEDULE

Dec 11 preach
Dec 18 Sunday School Program and Retirement Pot Luck
Dec 24 preach
Dec 25 preach
Jan 1 preach

East Union Lutheran Church
15180 County Road 40 • Carver, MN 55315 • www.eulc.org

Contact the Parish Office
Phone: 952-448-3450 Fax: 952-448-7634
E-mail: eastunionlc@gmail.com

Contact Pr. Tom
Cell: 763-516-1070
E-mail: thomasthetwin@aol.com

Contact Brandy
Cell: 952-406-0243
E-mail: eastunionlc@gmail.com

Pr. Tom's Office Hours
Tue and Thurs 9:00am-1:00pm
Or by appointment

Brandy Meyer, Youth & Parish Administrator
eastunionlc@gmail.com
Phone: 952-406-0243
Breann Rasmussen, Church Council President
952-368-4253
Ann Decker, Music Director
952-448-9528
Lori & Kerry Bohn, Custodians

For information about weddings and baptisms and about becoming a member, please contact the parish office, 952-448-3450, eastunionlc@gmail.com

Welcome to worship at East Union. Welcome visitors!

We are a congregation of the Evangelical Lutheran Church in America (ELCA). East Union is a community moving forward through grace, with the vision to be "A Wellspring of Faith, Hope, and Love"! Please sign the friendship pad located in the pew, near the center aisle, and greet one another. Sunday worship is at 9:00 a.m. with coffee fellowship and, during the school year, Sunday school at 10:15 a.m. Pew cushions are available from the ushers, as are headphones for those with hearing impairments. Newsletters detailing our congregational life can be found in the church entrance and in the next-door parish center, as well as at our Web site: www.eulc.org, where you will find much more information about our faith community.

Parents and Children

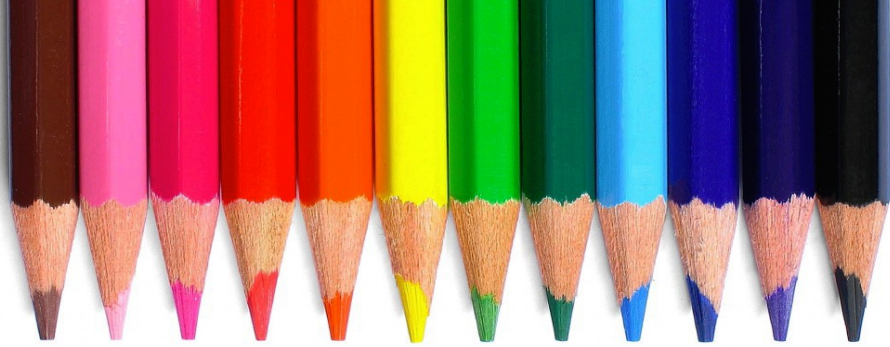
God put the "wiggle" in children; don't feel you have to suppress it in God's house. How we welcome children in church influences their response to God and the household of faith. To help children feel welcome, we provide activity bags and children's bulletins at the ushers' table in the church entrance, and each week we invite them to the front of our church sanctuary for a message in their own language. We now have a child care room in the back of the sanctuary. Please enter near the front doors of the church. An usher can show you. The room now has rocking chairs, a box of quiet toys and the closed glass doors provide some visibility to worship.

Prayer Corner

To add a name or to remove a name from the Prayer Corner, notify the EULC office, 952-448-3450, or eastunionlc@gmail.com. Names will remain on the prayer list approximately two weeks unless the office is otherwise notified.

Healing
Jerry Caesar, Darlene Olson, Ruth Steen, John Peterson, Bob Wirtz, Jerry Wallace, Cindy Tolk, Elizabeth Gardner

East Union Lutheran Church Cookbook Drawing Contest



We are looking for our EULC Youth to draw pictures for our EULC cook-book. Photos should be cooking/baking related or of our EULC community and church. Please submit all photos by January 15 using the envelope outside the office.

Any questions can be sent to eulccouncil@gmail.com

QUILTERS

The quilters will meet on the second and fourth Monday from 1:00pm—4:00pm. For questions, please contact Evelyn Grimm (952-448-9465) or Janet Schultz (952-448-3728).

December 4—December 11

Sunday, December 4, 2016
 9:00am Worship—Non Communion
 10:00am Fellowship/Sunday School
 11:00am Confirmation PCYC shopping

Sunday, December 11, 2016
 9:00am Worship—Communion
 10:00am Fellowship/Sunday School/Confirmation

God Invites Us to Generosity

November 27, 2016
 Attendance: 81
 Offering: \$ 1,697.00

2016 BUDGET (January 1 – December 1)

CHECKING BALANCE: \$14,515.42

YEARLY BUDGET
 Budget: \$151,488.00
 Actual: \$132,742.30
VARIANCE \$18,745.70

WEEKLY CONTRIBUTIONS
 Budget: \$3,156.00
 Actual: \$2,765.47
VARIANCE \$390.53

CARVER SENIOR CITIZENS LUNCHEON

The Carver Lions are hosting their 14th annual Senior Citizens Luncheon on December 7th at 11:30am. This will be held at St. Nicholas Church in Carver. Please call Sandy McGraw at 952.856.2655 to reserve.

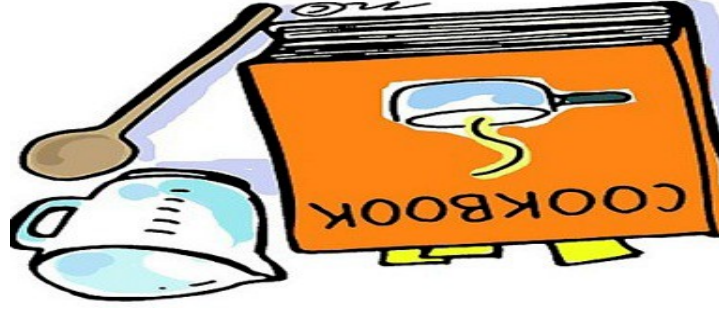
East Union Lutheran Church Cookbook

We're making a cookbook and we
need your help!

What to do:

- Select your favorite recipes (we would love to include some original EULC cookbook favorites but would appreciate all new recipes as well)
- Type or print them neatly
- Include your name
- Submit using the envelope outside the office or email it to eulccouncil@gmail.com
- Submit no later than January 15

All categories of recipes appreciated.
Thank you for your help and support!



BOOK GIVE-A-WAY

Pastor Tom is giving away most of his books.
Books include:

Bibles, Bible commentaries, Bible study, Children's books, Luther's Works, Ethics, Theology, Hymnals, Humor, sacraments, history, Lutheranism, and more.
There are hats used in children's sermons too.

Everything is free.

**This one time give-a-way
TODAY**

after church

Pick up some great Christmas gifts, or door stops, flower presses, gym weights, and yard ornaments.



ORNAMENTS

Help Yourself! There is a box of angel ornaments on the table in the back of church. Those were used on the Christmas trees for many years. They will bring back memories for those who participated in Christmas programs, or may have decorated the trees many, many years ago! Great stocking stuffer!

CHRISTMAS SWAGS

Thank you Lowell and Mary Bye for the donation toward the new, red Christmas swags in honor of their 50th wedding anniversary. Happy Anniversary!!

CHURCH WREATHS

The wreaths on the outside of the church are in loving memory of Gladys & Lyle Burfield, Loring Burfield, and Pat Eldrich. Donated by Carolyn Burfield.



Together, let's honor and celebrate
the retirement of

Pastor Tom

Stutelberg

Sunday, December 18

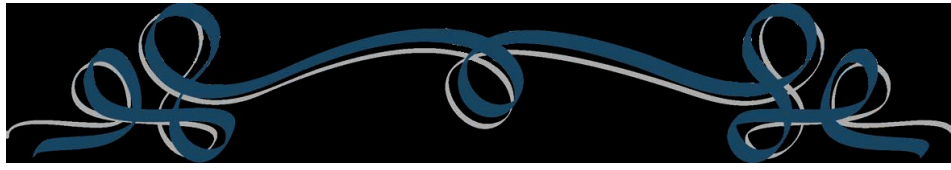
East Union Lutheran Church

15180 County Road 40 in Carver, MN

Thank you for your dedication, commitment
and service to the Lord and to East Union Lu-
theran Church. The congregation and commu-
nity of East Union express our gratitude for
your tremendous service.
You will be greatly missed!

The celebration will begin at 10 am fol-
lowing our 9 am worship service. It's a
potluck – please bring a dish to share!

*"He walks in the footprints of God. His shoes
are greatly worn. From the time he was a
child, heaven knew a pastor had been born"*
Excerpt from "God's Footprints" by Lisa J. Brown



CHRISTMAS POINSETTAS

The Christmas Poinsettias at the front of church are in hon-
or or in memory of someone this holiday season:

In Memory of Anna Johnson given by Randy & Tami John-
son

In Memory of Bettianne Wirtz given by The Wirtz Family

In Honor of Lori Rohrich, Amy Whaley and Stacie
Kolodejchuk given by Bob & Barb Kolodenchuk

In Honor of Carolyn Hallin in Memory of Scott Hallin
given by Chris Hallin

In Memory of Scott Hallin given by Carrie Hron

In Memory of Scott Hallin given by Carolyn Hallin

In Memory of Our loved ones who have gone before give
by Wayne & Rita Lundquist

In Honor of Holasek Family in Honor of our Mother/
Grandmother In Memory of Marie Bendcich given by Lori
Holasek

In Memory of Fred Cook given by Alma Cook

In Honor of Curt & Ester Lundquist given by Paul &
Jeanne Lundquist

