

### **Worship Leaders for Sunday, December 18**

<b>Ministers</b>	All the baptized!
<b>Organist</b>	Barb Wigness
<b>Preacher</b>	Tom Stutelberg
<b>Acolyte</b>	Olivia Olson
<b>Lector</b>	Margie Theis—Isaiah 7:10-16; Romans 1:1-7
<b>Ushers</b>	Tom Steers; Dave Lundquist
<b>Set Up</b>	Dwight & Janet Schultz
<b>Dish Washers</b>	Mik Gusenius; Dave Lundquist
<b>Clean-Up</b>	Breann & John Rasmussen; Kevin & Joan Abraham

### **Worship Leaders for Sunday, December 25**

<b>Ministers</b>	All the baptized!
<b>Organist</b>	Carol Kolodejchuk
<b>Preacher</b>	Tom Stutelberg
<b>Acolyte</b>	Ellynnor Haas
<b>Lector</b>	Bev Bandimere—Isaiah 62:6-12; Titus 3:4-7
<b>Ushers</b>	Larry Goetze; Bob Kolodejchuk
<b>Coffee Servers</b>	Janet & Dwight Schultz; Dave & Linda Hellriegel
<b>Dish Washers</b>	Dave & Linda Hellriegel

#### **Welcome to worship at East Union. Welcome visitors!**

We are a congregation of the Evangelical Lutheran Church in America (ELCA). East Union is a community moving forward through grace, with the vision to be "A Wellspring of Faith, Hope, and Love"! Please sign the friendship pad located in the pew, near the center aisle, and greet one another. Sunday worship is at 9:00 a.m. with coffee fellowship and, during the school year, Sunday school at 10:00 a.m. Pew cushions are available from the ushers, as are headphones for those with hearing impairments. Newsletters detailing our congregational life can be found in the church entrance and in the next-door parish center, as well as at our Web site: [www.eulc.org](http://www.eulc.org), where you will find much more information about our faith community.

### ***East Union Lutheran Church***

15180 County Road 40

Carver, MN 55315

Phone: 952-448-3450

Fax: 952-448-7634

Parish office e-mail: [eastunionlc@gmail.com](mailto:eastunionlc@gmail.com)

Pastor Tom Stutelberg e-mail: [thomasthetwin@aol.com](mailto:thomasthetwin@aol.com)

Brandy Meyer, Faith & Family Coordinator email: [eastunionlc@gmail.com](mailto:eastunionlc@gmail.com)

**[www.eulc.org](http://www.eulc.org)**

## **Fourth Sunday of Advent**

December 18, 2016 • 9:00 a.m. Worship



***East Union Lutheran Church***  
*Carver, Minnesota*

## **Fourth Sunday of Advent**

Today Isaiah prophesies that a young woman will bear a son and name him Emmanuel. The gospel is Matthew's account of the annunciation and birth of the one named Emmanuel, God-with-us. During these final days of Advent we pray, "O Come, O Come Emmanuel," a beloved hymn based on ancient prayers appointed for the seven days preceding Christmas. On this final Sunday in Advent we prepare to celebrate the birth of the one born to save us from the power of sin and death.

*When marked with \*, please stand as you are able. Liturgy is from Evangelical Lutheran Worship (ELW, or "cranberry" hymnal). "Pages" are in the front of the hymnal—follow the numbers at the bottom of the hymnal page. Songs use the hymn numbers at the top of the page.*

## **Gathering**

### **Announcements**

### **Call to Worship : The Wirtz Family**

Reading, Lighting of Advent Wreath—The Bethlehem Candle  
#279, v. 1

### **Ring the Bell**

<b>*Confessions</b> (right column)	<b>page 94</b>
<b>*Gathering Song-</b> <i>"Angels From The Realm Of Glory"</i>	<b>#275</b>
<b>*Greeting</b> ( <i>"The grace of our Lord Jesus Christ"</i> )	<b>page 147</b>
<b>*Kyrie</b> ( <i>"In peace, let us pray to the Lord"</i> )	<b>page 147</b>
<b>*Canticle of Praise</b> ( <i>"Glory to God in the Highest"</i> )	<b>page 148</b>
<b>*Prayer of the Day</b>	<b>page 150</b>

## **Word**

### **First Reading     Isaiah 7:10-16**

An Israelite and Aramean military coalition presented a serious threat to King Ahaz of Judah. In response, Ahaz decided to secure his throne and kingdom by seeking refuge in Assyrian help. Isaiah reminds Ahaz that human attempts to establish security will fail. The prophet gives the sign of Immanuel that is the only source of true safety: God is with us!

### **Second Reading   James 5:7-10**

Most of the Christians in Rome do not know Paul. In this letter's opening he introduces himself as an apostle divinely appointed to spread God's gospel. The gospel's content is the promised coming of Christ, and Paul's mission is to bring about the obedience of faith among all nations, including his Roman audience.

# ***THE SUNDAY SCHOOL PROGRAM***

## **Meal**

### **Thankoffering**

**Offertory**     *"We Give Thee But Thine Own"*

**#686**

### **\*Lord's Prayer**

**page 154**

*("Our Father in Heaven," in left column)*

## **Sending**

### **\*Blessing**

**\*Sending Song** *"Go Tell It On The Mountain"*

**#290**

### **\*Dismissal**

### **Postlude**

*This divine service continues with coffee and fellowship in the parish center and then with service in the world.*

## East Union Lutheran Church

15180 County Road 40 • Carver, MN 55315 • [www.eulc.org](http://www.eulc.org)

### Contact the Parish Office

Phone: 952-448-3450 Fax: 952-448-7634

E-mail: [eastunionlc@gmail.com](mailto:eastunionlc@gmail.com)

### Contact Pr. Tom

Cell: 763-516-1070

E-mail: [thomasthetwin@aol.com](mailto:thomasthetwin@aol.com)

### Contact Brandy

Cell: 952-406-0243

E-mail: [eastunionlc@gmail.com](mailto:eastunionlc@gmail.com)

### Brandy Office Hours

Mon.—Thurs 9:00am–1:00pm

*After hours, leave a message on the office phone.*

### Pr. Tom's Office Hours

Tue and Thurs 9:00am–1:00pm

Or by appointment

## Other Church Contacts

Lori & Kerry Bohn, *Custodians*  
952-448-9528

Ann Decker, *Music Director*  
952-368-4253

Brandy Meyer, *Youth & Parish Administrator*  
[eastunionlc@gmail.com](mailto:eastunionlc@gmail.com)  
Phone: 952-406-0243

Breann Rasmussen, *Church Council President*  
612-296-1050

*For information about weddings and baptisms and about becoming a member, please contact the parish office, 952-448-3450, [eastunionlc@gmail.com](mailto:eastunionlc@gmail.com)*

## **Welcome to worship at East Union. Welcome visitors!**

We are a congregation of the Evangelical Lutheran Church in America (ELCA). East Union is a community moving forward through grace, with the vision to be “A Wellspring of Faith, Hope, and Love”! Please sign the friendship pad located in the pew, near the center aisle, and greet one another. Sunday worship is at 9:00 a.m. with coffee fellowship and, during the school year, Sunday school at 10:15 a.m. Pew cushions are available from the ushers, as are headphones for those with hearing impairments. Newsletters detailing our congregational life can be found in the church entrance and in the next-door parish center, as well as at our Web site: [www.eulc.org](http://www.eulc.org), where you will find much more information about our faith community.

## Parents and Children

**God put the “wiggles” in children;** don’t feel you have to suppress it in God’s house. How we welcome children in church influences their response to God and the household of faith.

To help children feel welcome, we provide activity bags and children’s bulletins at the ushers’ table in the church entrance, and each week we invite them to the front of our church sanctuary for a message in their own language.

We now have a child care room in the back of the sanctuary. Please enter near the front doors of the church. An usher can show you. The room now has rocking chairs, a box of quiet toys and the closed glass doors provide some visibility to worship.

## Prayer Corner

To add a name or to remove a name from the Prayer Corner, notify the EULC office, 952-448-3450, or [eastunionlc@gmail.com](mailto:eastunionlc@gmail.com). Names will remain on the prayer list approximately two weeks unless the office is otherwise notified.

### Healing

Jerry Caesar, Darlene Olson, Ruth Steen, John Peterson, Bob Wirtz, Jerry Wallace, Cindy Tolk,

Elizabeth Gardner, Dale Carson



## East Union Lutheran Church

# Weekly Announcements

Sunday, December 18 (Fourth Sunday of Advent)

## **ONE MINUTE STEWARDSHIP SERMON**

Giving back. It’s what we do in this country, especially during the holidays. In 2015, our most generous year to date, Americans gave more than 373 billion to charity, according to the Giving USA Foundation’s annual report on Philanthropy. We continue to raise the bar when it comes to generosity. It has been six straight years that the amount has gone up. While you flip through all the requests for donations that come via mail or the internet don’t forget your church. East Union does good things and supports many other charities. Make a special donation to yourself in the form of a gift to East Union. It’s your church. Thanks for your offering today.

## **PANCAKE BREAKFAST**

The Youth & Education Committee is hosting a pancake breakfast on Sunday, January 15th from 7:30am –8:45am and 10:00am—12:00pm. Cost: \$7 adults, \$5 kids, 2 and under are free.

## **PASTOR TOM’S RETIREMENT SCHEDULE**

Dec 24 preach

Dec 25 preach

Jan 1 preach

## **CHRISTMAS SERVICES**

Saturday, Christmas Eve - 4pm

Candle Lighting, Carols, and Communion

Sermon Title: “A Cuban tree frog”

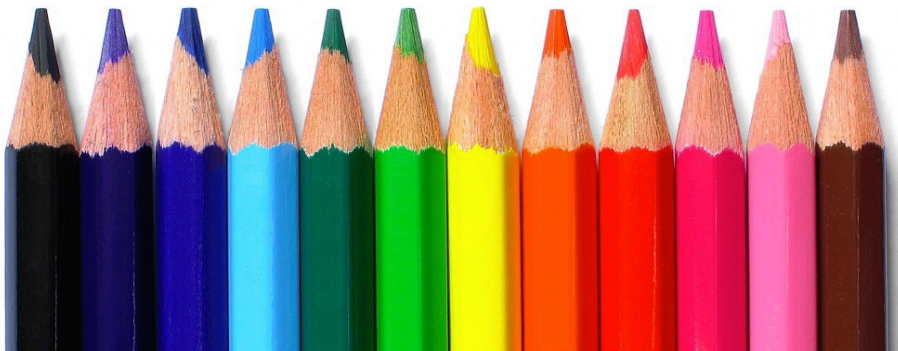
Sunday, Christmas Day—9am

Bring the kids in their pajamas

Sermon Title: “So God imparts to human hearts the message of God’s Heaven”

# East Union Lutheran Church

## Cookbook Drawing Contest



We are looking for our EULC Youth to draw pictures for our EULC cookbook. Photos should be cooking/baking related or of our EULC community and church.

Please submit all photos by January 15 using the envelope outside the office.

Any questions can be sent to  
eulccouncil@gmail.com

### QUILTERS

The quilters will meet on the second and fourth Monday from 1:00pm—4:00pm. For questions, please contact Evelyn Grimm (952-448-9465) or Janet Schultz (952-448-3728).

### December 11—December 18

#### Sunday, December 18, 2016

9:00am Worship/Sunday School Program—  
Non Communion

10:00am Fellowship/Retirement Party

#### Sunday, December 24, 2016

4:00pm Worship/Communion

#### Sunday, December 25, 2016

9:00am Worship/Non Communion

10:00am Fellowship

### God Invites Us to Generosity

December 11, 2016

Attendance: 83

Offering: \$1,312.00

## 2016 BUDGET

(January 1 – December 12)

**CHECKING BALANCE: \$12,501.66**

### YEARLY BUDGET

**Budget: \$157,800.00**

**Actual: \$138,149.30**

**VARIANCE \$19,650.70**

### WEEKLY CONTRIBUTIONS

**Budget: \$3,156.00**

**Actual: \$2,762.99**

**VARIANCE \$393.01**

# East Union Lutheran Church

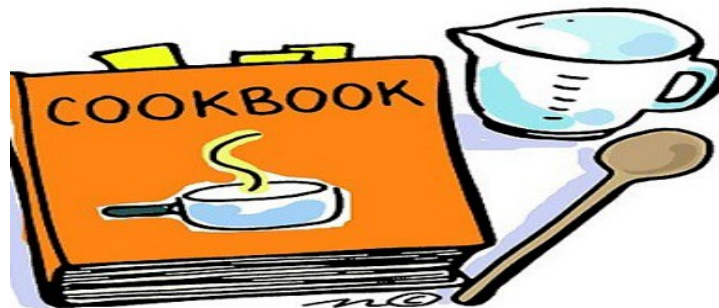
## Cookbook

We're making a cookbook and we need your help!

### What to do:

- Select your favorite recipes (we would love to include some original EULC cookbook favorites but would appreciate all new recipes as well)
- Type or print them neatly
- Include your name
- Submit using the envelope outside the office or email it to [eulccouncil@gmail.com](mailto:eulccouncil@gmail.com)
- Submit no later than January 15

All categories of recipes appreciated.  
Thank you for your help and support!



### 2016 Christmas Program

Please join us in singing Silent Night as our children walk in.

Verse 1: Silent night, Holy night

All is calm, all is bright

Round yon virgin, mother and child

Holy infant, tender and mild

Sleep in heavenly peace,

Sleep in heavenly peace.

Verse 2: Silent night, Holy night

Son of God, love's pure light

Radiant beams from thy holy face

With the dawn of redeeming grace,

Jesus, Lord at thy birth

Jesus, Lord at thy birth.

Verse 3: Silent night, Holy night

Shepherds quake, at the sight

Glorious stream from heaven above

Heavenly, hosts sing Hallelujah.

Christ the Savior is born,

Christ the Savior is born.

SONG - Shout, Shout! Go Tell it on the Mountain - Sung by the children

SONG - Oh What a Special Night - Sung by the children

SONG - Joy to the world - Sung by the children

SONG - Go Tell it on the Mountain - Sung by the children (Fill free to join us on the chorus)

### Sunday School Children

Narrator 1: Victoria Wirtz

Narrator 2: Connor Schuergen

Angels: Nora Sandeen, Gracelyn Heggstad, Mairyn Rasmussen,

Emerg Wigland & Rebecca Sandeen

Shepherds: Parker Schuergen & Marlee Wirtz

Mary: Abigail Sandeen

Joseph: Sean Haas

Sheep: Hunter Wherley, Gavin Holasek & Cadence Rasmussen

Cows: Grant Lundquist, Cooper Wherley & Rylan Gusenius

Donkey: Cole Trimbo





Together, let's honor and celebrate  
the retirement of

# Pastor Tom Stutelberg TODAY

East Union Lutheran Church

15180 County Road 40 in Carver, MN

Thank you for your dedication, commitment  
and service to the Lord and to East Union Lu-  
theran Church. The congregation and commu-  
nity of East Union express our gratitude for  
your tremendous service.  
You will be greatly missed!

*"He walks in the footprints of God. His shoes  
are greatly worn. From the time he was a  
child, heaven knew a pastor had been born"*  
Excerpt from "God's Footprints" by Lisa J. Brown



## CHRISTMAS POINSETTIAS

The Christmas Poinsettias at the front of church are in hon-  
or or in memory of someone this holiday season:

In Memory of Anna Johnson given by Randy & Tami John-  
son

In Memory of Bettianne Wirtz given by The Wirtz Family

In Honor of Lori Rohrich, Amy Whaley and Stacie  
Kolodejchuk given by Bob & Carol Kolodenjchuk

In Honor of Carolyn Hallin in Memory of Scott Hallin  
given by Chris Hallin

In Memory of Scott Hallin given by Carrie Hron

In Memory of Scott Hallin given by Carolyn Hallin

In Memory of Our loved ones who have gone before give  
by Wayne & Rita Lundquist

In Honor of Holasek Family in Honor of our Mother/  
Grandmother In Memory of Marie Bendeich given by Lori  
Holasek

In Memory of Fred Cook given by Alma Cook

In Honor of Curt & Ester Lundquist given by Paul &  
Jeanne Lundquist

